

ANNUAL DEVELOPMENT COOPERATION
REPORT OF ETHIOPIA
ETHIOPIA FISCAL YEAR 2011(G.C. 2018/19)

Ministry of Finance



**ANNUAL DEVELOPMENT COOPERATION
REPORT OF ETHIOPIA**
ETHIOPIA FISCAL YEAR 2011 (G.C. 2018/19)

Ministry of Finance



Foreword



I am pleased to present the Annual Statistical Bulletin on Development Cooperation of Ethiopia for the period EFY 2011 (8 July 2018 to 7 July 2019). It provides an overall overview of development cooperation, Official Development Assistance (ODA) flows to the country by all development partners, and ODA flows and contribution to different sectors.

According to Aid Management Platform data during the reporting period, USD 4.48 billion was committed and USD 4.24 billion was disbursed of which 94% of the disbursement was for projects implemented by the government. Although continued increase in external development financing is observed over the last decade, the Ethiopian economy requires a significant amount of additional financing.

In addition to the regular external resource mobilization, the recently launched Home-Grown Economic Reform (HGER) that aims to overcome the macro-economic imbalance, institutional and structural challenges through comprehensive and well-synchronized set of measures, requires 9 billion USD as additional financing over the next 3 years. The reform consists of structural changes aimed at removing business constraints, opening sectors to private sector competition, and enhancing transparency and accountability in State-Owned Enterprises, coupled with macroeconomic measures that will help in correcting imbalances and safeguarding financial stability while addressing sectoral issues. Close to USD 4 billion additional financings is under discussion from bilateral and multilateral sources. On top of securing this financing, the Ministry of Finance will strategically approach development partner to fill the resource gap.

Currently, development Partners are leveraging potential official Development Assistance (ODA) to mobilize other resources for sustainable development; to improve country's trade performance & integration into the world economy, and to mobilize domestic resources of the country to engage private sectors in the development process of the country. However, more must be done to meet the finance demand of the country to achieve middle income status by 2025.

This bulletin also presents 2018 Global Partnership Effective Development Cooperation (GPEDC) monitoring survey results and it indicates where progress has been made and where challenges remain, it also informs how government and development partners can strengthen our collective action towards the achievement of the GTP II and 2030 Agenda for Sustainable Development.

Finally on behalf of the government of Ethiopia, I would like to extend immense appreciation to all our development partners who have supported the development effort in the country.

A handwritten signature in blue ink, consisting of a series of loops and strokes, representing the name Admasu Nebebe.

*Admasu Nebebe,
State Minister, Ministry of Finance*



Table of Contents

FOREWORD

**Message from Mr. Admasu Nebebe,
State Minister, Ministry of Finance**

5

ACRONYMS

8

DEFINITION OF KEY TERMS

9

EXECUTIVE SUMMARY

10

INTRODUCTION

12

Commitment

14

Disbursement

16

Aid Effectiveness

18

FIGURES

Figure 1: Top ten commitments covering 69% of the total commitment of EFY 2011 (USD)

Figure 2: Distribution of Commitment by Sector EFY 2011

Figure 3: Trends in ODA disbursement (in million USD)

Figure 4 Change in Development Partners Disbursement in EFY 2011 Vs 2010 (in million USD)

Figure 5: Distribution of Disbursement by Development Partners Group During EFY 2011(in million USD)

Figure 6: Top Five Development Partners

Figure 7: Change in Disbursement of Sectors EFY 2011 Vs EFY 2010 (in million USD)

Figure 8: Trends of Development Partners Alignment

Figure 9: Development Partners Annual and medium Term Predictability

Figure 10: Trend of Development Partners Use of Country System

ANNEX

Annex 1:Framework Agreements

Annex 2: Commitment Matrix, EFY 2011

Annex 3: Aid Dependency Trend

Annex 4: Disbursement by Development Partners (EFY 2011 Vs 2010) in million USD

Annex 5: Disbursement to Non-Governmental Organization EFY 2011(in million USD)

Annex 6: List of Development Partners who provided input at national level for 2018 GPEDC monitoring survey

Annex 7: Distribution of Disbursement by Development partners and by Sectors EFY 2011(in million USD)

Annex 8: Distribution of Disbursement by Sectors and by Development Partners EFY 2011(in million USD)

ACRONYMS

ADB	Africa Development Bank
AGP	Agricultural Growth Programme
BADEA	Arab Bank for Economic Development in Africa
CRGE	Climate Resilience Green Economy
DAG	Development Assistance Group
DFID	Department for International Development
DLI	Disbursement Linked Indicators
DP	Development Partner
EDCTF	Effective Development Cooperation Task Force
EIB	European Investment Bank
EU	European Union
FAO	Food and Agriculture Organization
GEF	Global Environmental Facility
GEQUIP	General Education Quality Improvement Programme
GEQUIP-E	General Education Quality Improvement Programme for Equity
GAVI	Global Alliance for Vaccines and Immunization
GTP	Growth and Transformation Plan
GF	Global Fund
GPEDC	Global Partnership for Effective Development Cooperation
HLF	High Level Forum
IDA	International Development Association
IFAD	International Fund for Agricultural Development
IFIs	International Financial Institutions
ILO	International Labor Organization
JICA	Japan International Cooperation Agency
KOICA	Korea International Cooperation Agency
LDCs	Least Developing Countries
NDF	Nordic Development Fund
ODA	Official Development Assistance
OECD	Organization for Economic Co-operation and Development
OFID	OPEC Fund for International Development
PBS	Promotion of Basic Service
P4R	Program for Result
PRRO	Protracted Relief and Recovery Operation
PSNP	Productive Safety Net Programme
SLMP	Sustainable Land Management Programme
SDG	Sustainable Development Goal
TA	Technical Assistance
UN	United Nations
UNDP	United Nations Development Programme
UNESCO	United Nations Educational, Science and Culture Organization
UNFPA	United Nations Fund for Population
UNICEF	United Nations Children Fund
UNIDO	United Nations Industrial Development Organization
USAID	United States Aid for International Development
WB	World Bank
WFP	World Food Program

Definition of Key Terms

Commitment is the amount of resources committed on the date the agreement was signed.

Disbursement refers to actual receipt of funds.

Grant refers to transfers made in cash, goods, or services for which no repayment is required.

Loan, in this context, refers to concessional loan, which is also known as soft loan. A concessional loan contains at least a 35 percent grant element, which means that it has lower interest rate, longer grace and repayment periods than commercial loans.

Project Support is development intervention designed to achieve specific objectives within specified resources and designated implementation period, often within the framework of broader programme support.

Programme support is a development intervention that has longer time period and it involves multiple activities that may cut across sectors, themes and /or geographic areas.

Ongoing program/project is a programme/project status in which a financing agreement has been signed and is under implementation.

Completed program/project is a programme/project status that shows the end of the physical progress of programme/project.

Closed program/project is a programme/project status in which financial flows come to an end, and official closure procedures have been performed.

Aid fragmentation is the dispersion of small aid activities initiated by numerous donors within a given developing country.

Aid proliferation is the aid dispersion from the perspective of an individual development partner, how a partner's aid is spread over different sectors (or projects) within a given country.

Disbursement-linked indicators (DLIs) are indicators whose achievement triggers the disbursement of funding from development partners to the Government.



Executive Summary

The Second Growth and Transformation Plan (GTP II) aims to transform Ethiopia into an industrialized carbon neutral middle-income country by 2025. The country has mainstreamed the sustainable development goals (SDGs) into GTP II. There is a strong linkage among the Climate Resilient Green Economy (CRGE), Sustainable Development Goals (SDGs) and GTP II. Ethiopia's Gross Domestic Product (GDP) is estimated to be around 96 billion USD in EFY 2011¹(2018/2019). The share of agriculture sector to GDP has consistently declined, and stands at 35.9% in 2018/19. The share of the services sector to GDP, on the other hand, rose from 38.6% to 38.8% and the share of the industrial sector to GDP has reached 25.3% in 2018/19.

Achieving the Sustainable Development Goals in general and the targets under GTP II in particular requires fund and co-operation with development partners on an unprecedented scale. The GTP II plan envisioned to collect revenue of 479.1 billion birr and to cover 85% of expenditure from domestic sources, while 7.6% is expected to be covered from external sources and the rest from domestic borrowing. Hence, domestic resource mobilization capacity remains a key priority towards the achievement of GTP II targets and ensures the sustainable development of the country. Enhanced tax revenue mobilization is featured as one of the critical focus areas of the government. However, external resources mobilization still plays a key role in filling the gap between the domestic revenues and budgetary requirement.

During EFY 2011 reporting period USD 4.48 billion new resource was committed and USD 4.24 billion was disbursed. Out of which, USD 4.0 billion (94% of the total disbursement) was for projects implemented across different sector.

Disbursement through government, USD 4.0 billion, was made for 332 projects/programs by 37 development partners. It is equivalent to 4.1 % of GDP and 11.9% of Gross capital formation². Out of the total disbursement, the grant part accounted for 55% and concessional loans accounted for 39% while the remaining 6% was technical assistance. Disbursement has increased by 14.5% (USD 506 million) when compared to the previous year (USD 3.4 billion, EFY 2010). This was due to the World Bank Group (IDA) disbursement of USD 1.2 billion in the form of Development Policy Operation to

1. National Planning Commission, National Accounts, 2018/2019.

2. ODA/Gross Capital formation indicates reliance on ODA to support gross fixed capital formation (i.e new value added in an economy).It indicates the extent to which governments need external rather than domestic resources to fund growth-enhancing investments. Annex 3 provides trends of aid dependency indicators of the country.



support the government reform among others. Out of the total disbursement made USD 1.9 billion or 48% was channeled through government treasury to support ten large government programs and 29.8% was disbursed in the form of General/Direct budget support.

This shows development partners move towards the use of government system, which shows improvements in aid effectiveness principle parameters. Disbursement to economic sector has improved; this is mainly due to IDA's Direct Budget Support. However, the overall disbursement to service sectors (health, education and water supply & sanitation), infrastructure sector (energy and transport), and multi sectors/cross cutting sector has declined during EFY 2011. The reasons for the decline in disbursement among others were due to partial fulfillment of DLI³ of health sector budget support program (EU), Health SDG program (IDA), GEQUIP-E (IDA). In addition some projects entering completion phase such as: GEQUIP-E (IDA), TB and Malaria projects (GF); One WASH (DFID, ADB, Finland, UNICEF) limited the resources flow. Furthermore, Government decision to stop accessing non concessional sources also reduces the disbursement flow. The decision was based of the debt distress shift from moderate to high risk.

The 2018 Global Partnership for Effective Development Cooperation (GPEDC) monitoring result indicates that development partners registered good result in aligning and using country – led results framework, and both annual and Medium Term Expenditure Framework (MTEF) predictability results improved from 2016 GPEDC. However, it is still below the average for LDCs. Only 79% of the total funds were disbursed as planned and 54% of the total funds were reflected in the rolling 3-5 years expenditure plans shared with the government.

Generally, Development Partners are leveraging ODA to mobilize other resources for sustainable development; to improve the country's trade performance & integration into the world economy, to enhance domestic resources mobilization and engagement of private sectors in the development process of the country.

3. Disbursement-linked indicators (DLIs) are indicators whose achievement triggers the disbursement of funding from development partners to the Government (for the variable tranche element of development partner financing). The DLI matrix guides assessment of achievement of these DLIs. The matrix contains the annual results to be achieved by program year as well as the protocol that outlines the evidence that is required to demonstrate achievement.



Introduction

Ministry of Finance is mandated by proclamation no 1097/2011 that defines duties and responsibilities of the Executive Body of FDRE, among others, to formulate strategies with a view of increasing the type and volume of foreign development assistance; negotiate and sign cooperation agreements and, in consultation with the concerned institutions, and subsequently follow up the implementation of projects/program over the course of their life. Thus, the Ministry of Finance is responsible for overall management and coordination of external development assistance in the country. In order to achieve this objective, currently, the external resource Mobilization team at MoF is headed by a State Minister which coordinates specialized directorates including: Bilateral, Ethio-China, European Union (EU), International Financial Institutions (IFIs) and United Nations (UN). The source of data for this bulletin is the Aid Management Platform (AMP) which exist since 2005 in the MoF and 2018 GPEDC monitoring report released by OECD-UNDP joint support team. This bulletin uses OECD/DAC sector classifications. All amount indicated in this bulletin are expressed in United States Dollars (USD), unless otherwise noted.

To enhance the management of development assistance at the national level, the Government of Ethiopia in cooperation with its development partners established Aid Management Platform (AMP) in order to record external resources flow data in comprehensive and timely manner. AMP provides an easy access to users and generates up-to-date information which facilitates easy information sharing among stakeholders and ensures knowledge based decision making by government authorities and other stakeholders. The AMP system is contributing to effectiveness of aid, increase transparency and promote greater mutual accountability and ownership.

This Bulletin offers a comprehensive picture of Official Development Assistance (ODA) to Ethiopia in EFY 2011 (July 8/2018-July 7/2019). The data in this bulletin are presented in the form of tables and graphs under three major sections.

Section 1: Presents an overall overview of commitment from bilateral and multilateral development partners.

Section 2: Presents Disbursement by Development Partners and by Sectors. This section provides overall overview of disbursement made by bilateral and multilateral development partners and employs the OECD sector classification, and provides information about the specific areas into which resources flow.

Section 3: Reviews the collaboration between the Ethiopian government and development partners from development effectiveness agenda point of view.

This Statistical Bulletin can be used by many stakeholders including Development partners who can use this to identify sectors that might require further support in attaining Sustainable Development Goals (SDG) and the Growth and Transformation Plan II (GTPII) objectives. It is also expected that the information contained in this Bulletin will help researchers, government institutions, and non-governmental organizations in their analysis of the Official Development Assistance provided to Ethiopia.

The AMP data was used as a main source of information to validate 2018 GPEDC inputs from development partners, especially for indicator 1 and 5a⁴. However, for the next GPEDC monitoring, it requires to go beyond this, concrete effort should be made to ensure that the next GPEDC monitoring survey data is taken from AMP.

To this end, development partners on top of providing actual disbursement data they are required to provide annual planned disbursement, 3-5 year rolling future disbursement plan and to provide information regarding the use of country system and so on for each program/project under Global Partnership Indicator (GPI) section on AMP. Hopefully this will advance the quality of national report submitted to UNDP-OECD joint support team and helps to make GPEDC inputs from Development partners in more transparent manner which helps to avoid human error.

Unlike the previous years, the current bulletin has improved on the comprehensiveness of the development cooperation among other by including Global Alliance for Vaccines and Immunization (GAVI) and Global Fund (GF) commitment and disbursement information from the AMP system.

4. Indicator 1-development partners use country- led result framework and indicator 5a - annual aid predictability

Commitment

104

Programs / Projects

4.48

Billion USD
Committed in
EFY 2011

30%

For Agriculture
sector

27%

For General
budget support

During EFY 2011, twenty-seven development partners committed⁵ a total amount of USD 4.48 billion to support implementation of 104 programs/projects, out of which 65 new and the rest 39 existing. Out of the total commitment, 59.3% was in the form of grant and 39.4% in the form of concessional loan and the remaining 1.4% technical assistance.

Bilateral and Multilateral institutions provided 30% and 70% of the total commitment respectively. Among the multilateral institutions IFIs accounted for 85%, of which WB (IDA) commitment of USD 1.26 billion was allocated for budget support (Development Policy Financing).The WB(IDA) budget support financed the ongoing economic reform in the country. It is for the first time, after 13 years of stoppage, that development partners have started budgetary support to Ethiopia to assist the government on the ongoing reform work.

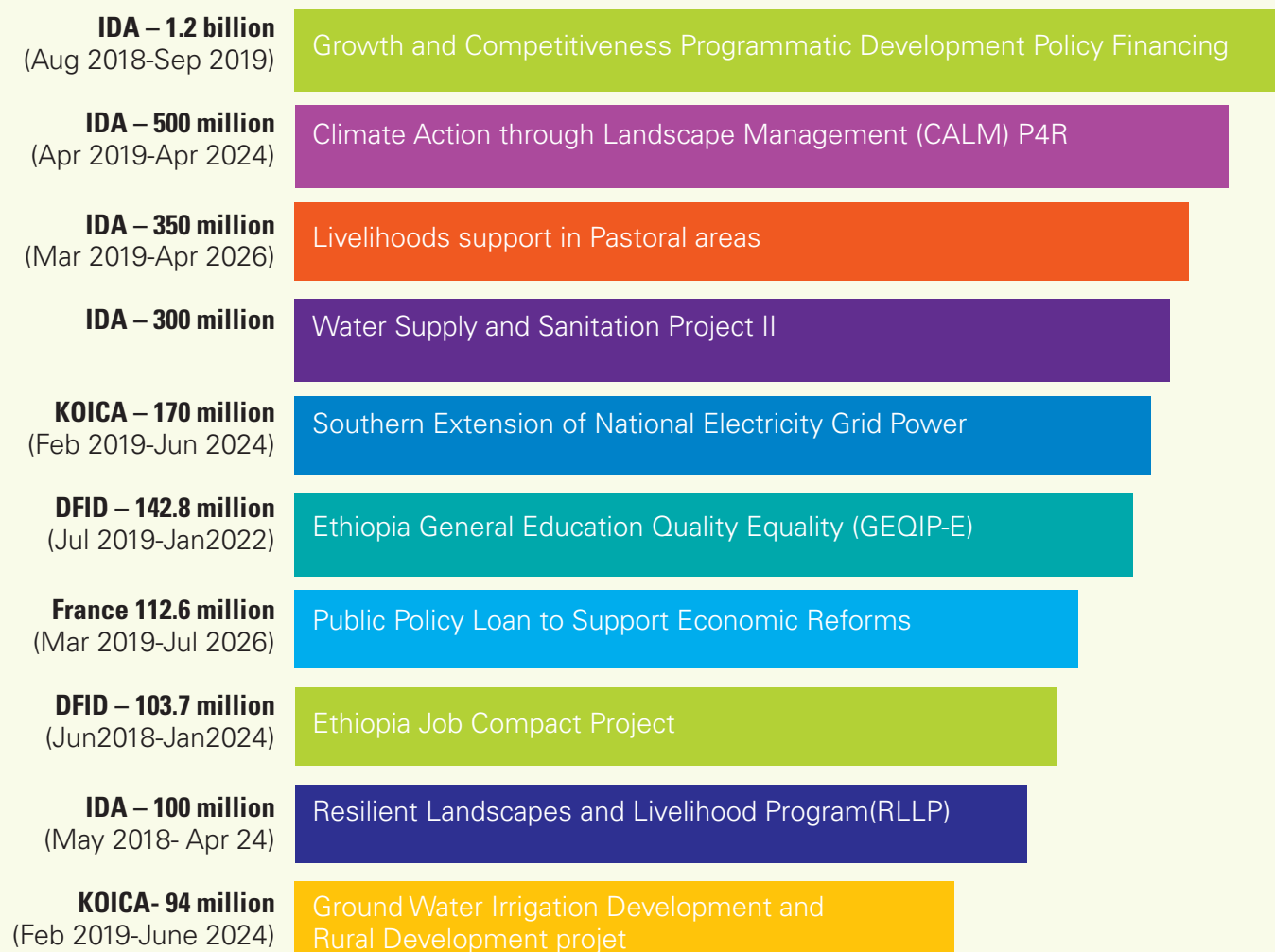


Figure 1: Top ten commitments covering 69% of the total commitment of 2011 EFY (USD)

5. Annex 2 provides commitments matrix during EFY 2011. It gives a broad indication of sectors and thematic areas where committed. The mapping helps for division of labor in the context of the aid effectiveness agenda.

The commitment made is expected to maximize finance for development; boost competitiveness through a better environment for the private sector; and enhance public transparency and accountability to promote good governance in order to mobilize private investments through Public Private Partnerships (PPP); reform the power sector to prepare for more private participation and competition; reform the logistics sector to reduce costs and improve efficiency through private sector participation and competition; reform the telecom sector to improve connectivity to prepare for more private participation and competition; improve the investment climate to foster private sector growth; take steps towards modernizing the finance sector to meet the needs of a growing private sector; ensure the proper functioning of the government bond market and foreign exchange market; promote citizen information and participation; and improve public enterprise management, transparency and accountability.

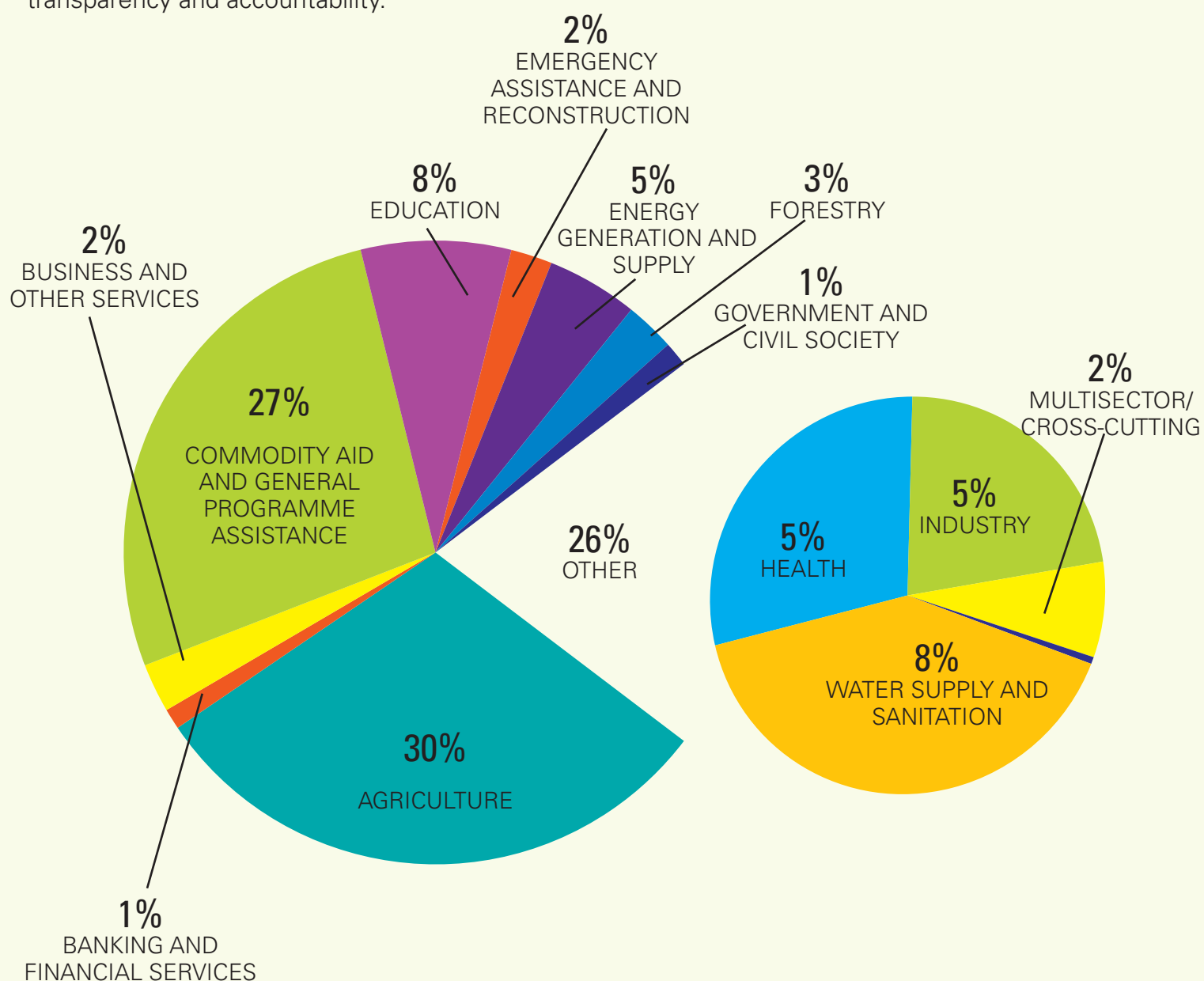


Figure 2: Distribution of Commitment by Sector EFY 2011

Disbursement

Disbursement by Development Partners to government

During EFY 2011, 37 development partners disbursed a total of USD 4.0 billion for 332 projects implemented by the government across multiple sectors throughout the country. This shows an annual increase of 14.5% (USD 506 million) when compared to the previous year (USD 3.4 billion). The disbursement during the year was 4.1% of GDP or is equivalent to 11.9% Gross capital formation⁶. Out of the total disbursement, grant accounted for 55% and loans accounted for 39% while the remaining 6% was technical assistance.

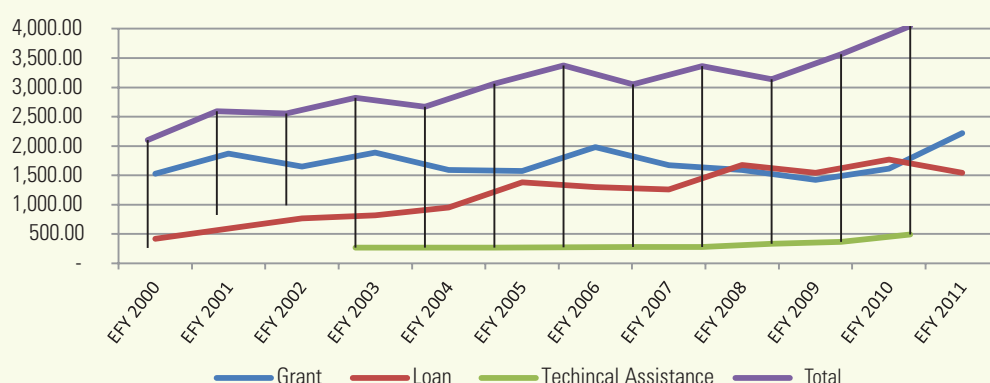


Figure 3: Trends in ODA disbursement (in million USD)

The share of grant has been in declining trend until end of EFY 2009, then after it has started increasing, in EFY 2011 the share disbursement in the form of grant has increased to 55% from 46% in EFY 2010. Similarly, the share of loan has decreased to 39% from 51% in the previous year. The increase in disbursement during 2011 was mainly due to disbursement of USD 1.2 billion to development policy financing project by IDA among others.

During the reporting period, 20 development partners have reduced their disbursement for the projects implemented by government institutions while 17 development partners have increased when compared to disbursement performance of last year (2010). The comparing is shown in the next figure.

4.0

Billion USD
Total Disbursement

29.8%

For general
program support

24.4%

For Agriculture

Major development
partners in EFY 2011

57.6%

WorldBank
Group

8.4%

United
Kingdom

5.9%

United
States

6. ODA/Gross Capital formation indicates reliance on ODA to support gross fixed capital formation (i.e new value added in an economy).It indicates the extent to which governments need external rather than domestic resources to fund

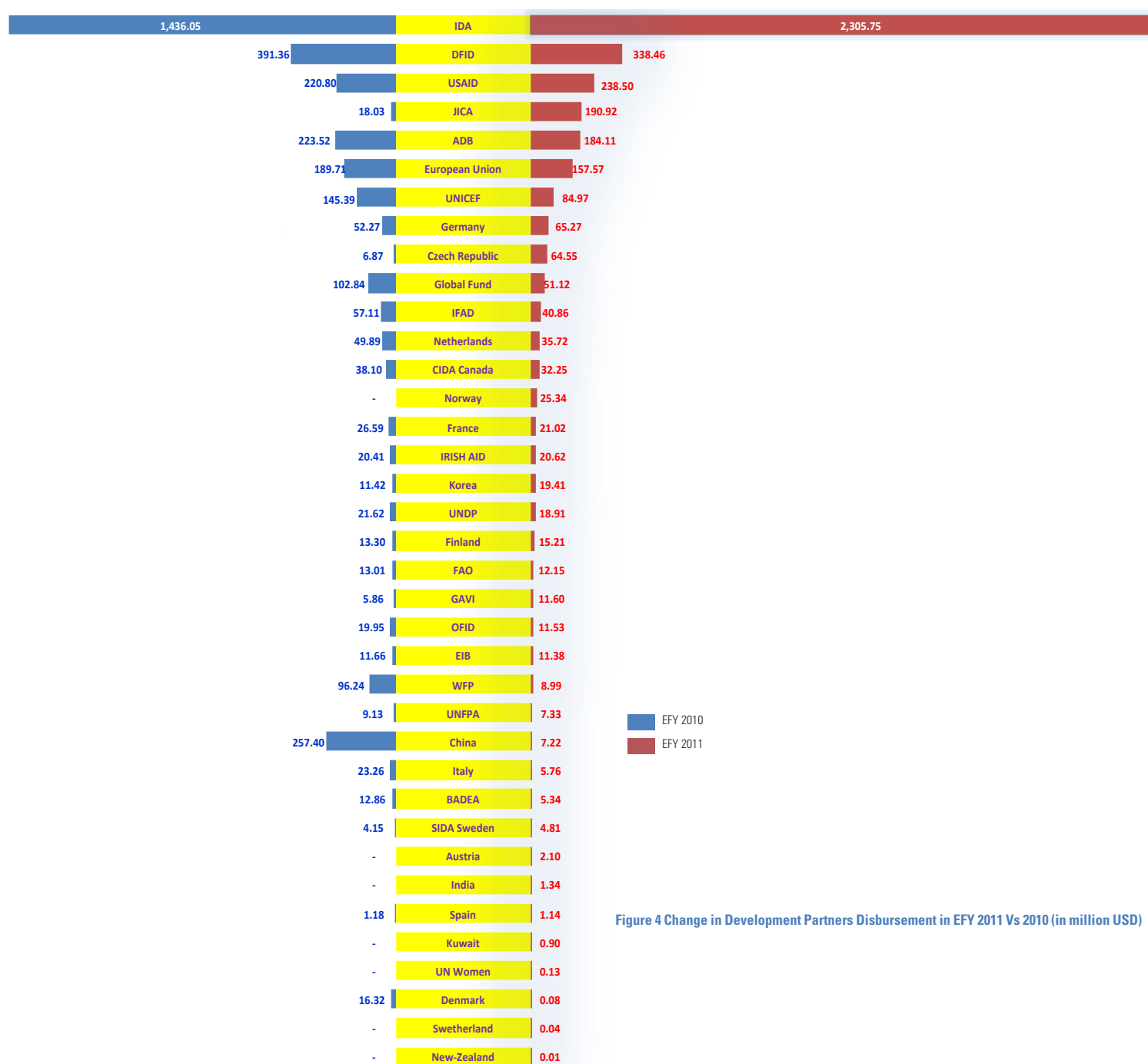


Figure 4 Change in Development Partners Disbursement in EFY 2011 Vs 2010 (in million USD)

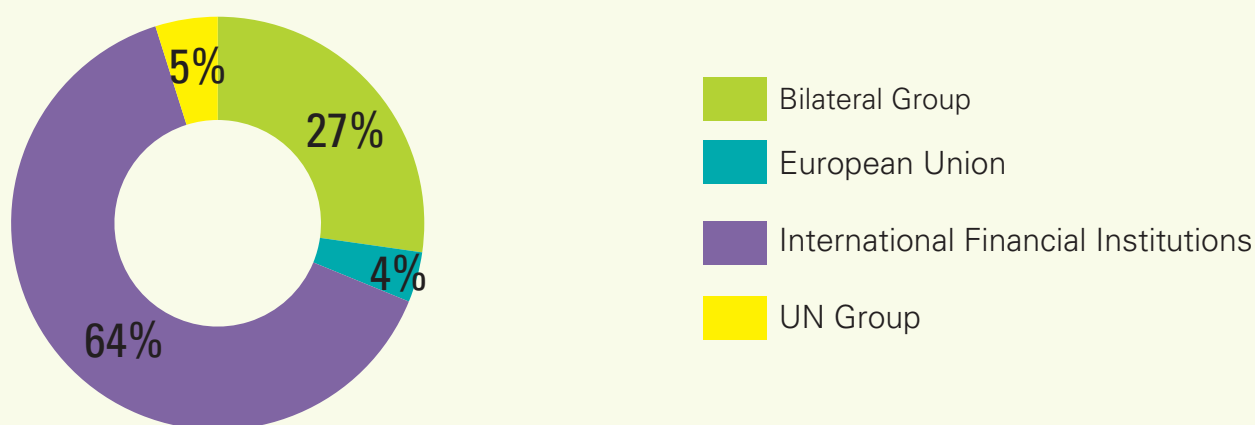


Figure 5: Distribution of Disbursement by Development Partners Group During EFY 2011(in million USD)

Multilateral and Bilateral development partners disbursed USD 2.9 billion (73 %) and USD 1.1 billion (27%), for the implementation of 161 and 171 projects/programs, respectively.

Out of the total disbursement of bilateral partners USD 574.7 million (53%) was from EU member bilateral partners while USD 515.9 million from non-EU member bilateral partners. Disbursement from non-EU member bilateral partners decreased by USD 30 million (5.4%) when compared to the previous year. The sum of disbursement from EU member bilateral partners & European Union was USD 732 million that decreased by USD 63 million (8%) as compared to previous year.

- European Union contributed USD 157.6 million (4% of the total), its disbursement increased by 62% (USD 17 million) from the previous year.
- International Financial Institutions disbursed USD 2,558.9 million (61% of the total), which increased by 45% (USD 797.8 million) when compared with EFY 2010.
- UN Agencies disbursed USD 195.2million⁷ (5% of the total) which decreased by 5% (USD 199 million) from the previous year.

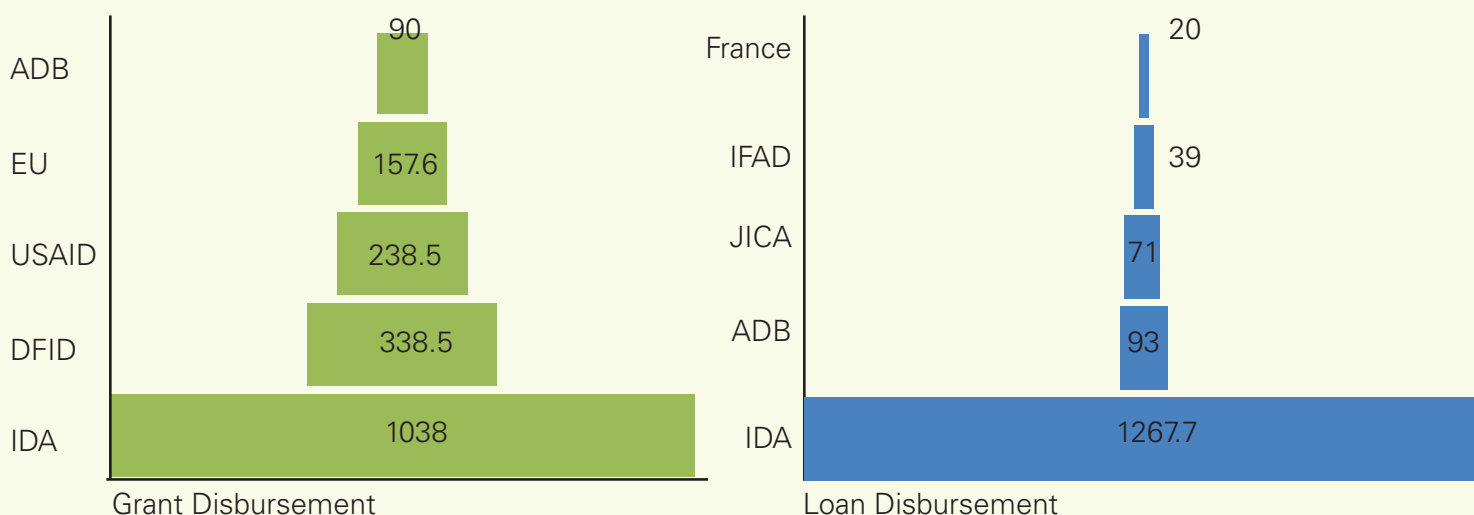


Figure 6: Top Five Development Partners during EFY 2011(amount in million USD)

USD 1.9 billion or 48% of the total development assistance was channeled through government treasury for ten large government programs. These include: Growth and Competitiveness Development Policy Financing (USD 1.2 billion), Enhanced Shared Prosperity through Equitable Services (ESPES) (USD 147 million), Productive Safety Net Program (PSNP) (USD 246.5 million), General Education Quality improvement Program (GEQIP) (USD 45.6 million), Urban Productive Safety Net Program (UPSNP) (USD 88.3 million), Land Investment Transformation Program (LIFT) (USD 15.8 million), Health Sector Budget Support (HSBS) (USD 33.6 million), Water, Sanitation and Hygiene Program (WASH) (USD 48.5 million), Basic Service Transformation (BST) (USD 84.3 million) and Public Finance Management program (PFM) (USD 5.2 million). Out of the total disbursement through government system 29.8% was for General/Direct budget support.

Disbursement by Development Partners to Non-Governmental Organizations

During EFY 2011 development partners disbursed USD 241 million through Non-Governmental Organizations⁸, 68% of which was for humanitarian related programs while the rest 32% for development programs. Please refer to annex 5 to see development partners' disbursement through NGOs.

7. This figure doesn't include the USD 18.3 million resources that UN agencies mobilized locally from bilateral donors to implement projects.

8. Disbursement through non-governmental organization here refers disbursement made by development partners in the country for projects implemented signed with non-governmental organization at country level. It doesn't refer disbursement to NGO or IGO from HQ, charity organization and so on.

Disbursement by Sectors

EFY 2011 performance indicates that disbursement to economic sector⁹ has improved. This is mainly due to IDA's Direct budget support. However, the overall disbursement to service sectors (health, education and water supply & sanitation), infrastructure sector (energy and transport), and multi sectors/cross cutting sector has declined during EFY 2011. The reasons for the decline in disbursement among others were due to partial fulfillment of DLI³ of health sector budget support program (EU), Health SDG program (IDA), GEQUIP-E (IDA). In addition some projects entering completion phase such as: GEQUIP-E (IDA), TB and Malaria projects (GF); One WASH (DFID, ADB, Finland, UNICEF); limited the resources flow. Furthermore, Government decision to stop accessing non concessional sources also reduces the disbursement flow. The decision was based of the debt distress shift from moderate to high risk.

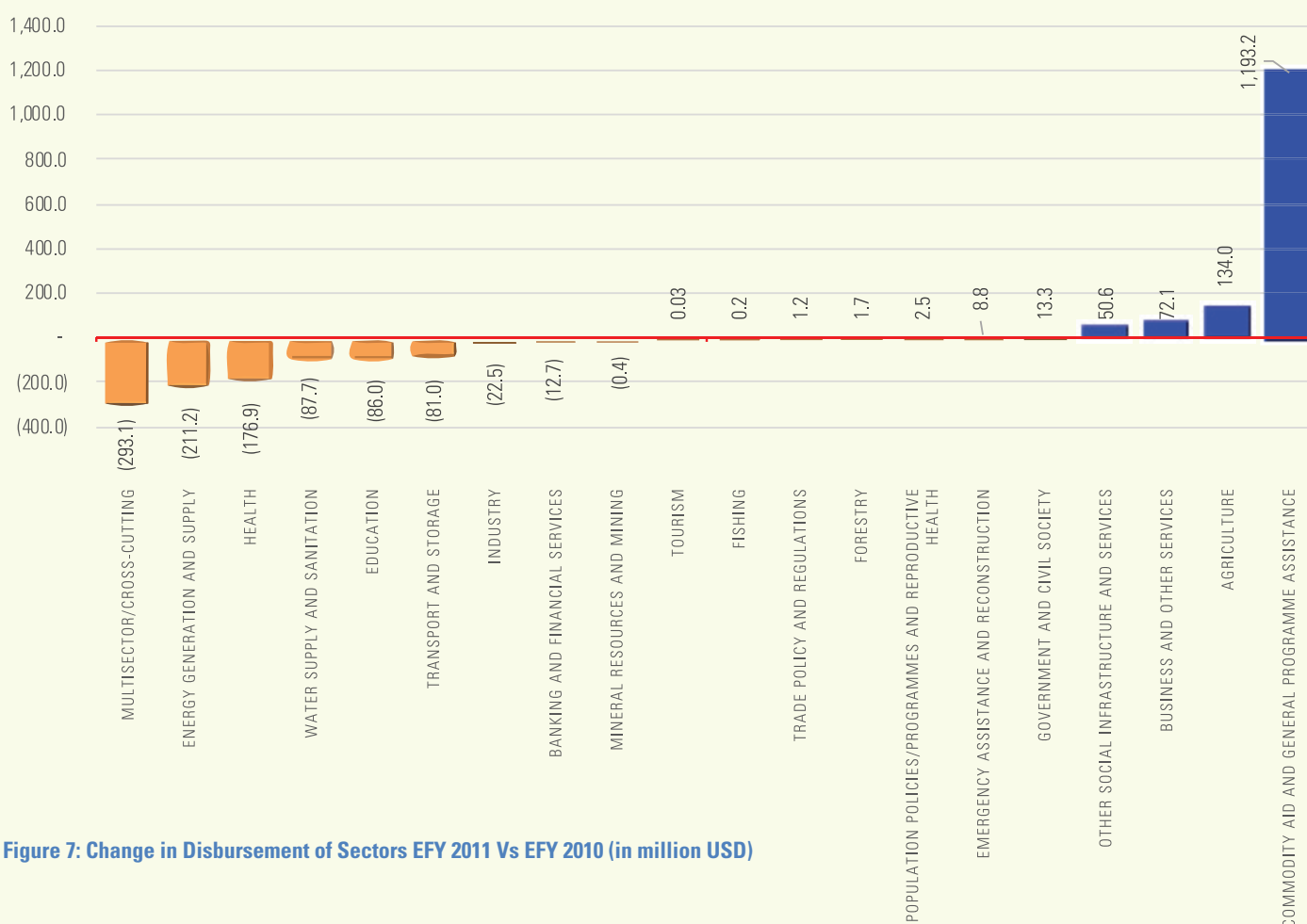


Figure 7: Change in Disbursement of Sectors EFY 2011 Vs EFY 2010 (in million USD)

Development Partners are leveraging ODA to mobilize other resources for sustainable Development.

For instance,

- **To improve the country's trade performance and integration into the world economy**, Denmark, European Union, IDA and UNDP has disbursed million USD of 0.07, 2.4, 3.7, and 0.03 respectively during the reporting period.
- **To enhance domestic resource mobilization of the country** DFID has provided financial assistance of 0.24 million USD to transform tax administration and tax policy capacity of the country in order to increase tax revenue, improve the business operating environment, ensure tax does not overburden the poor, and improve compliance in relation to the tax system.

9. Economic sector refers to sectors like Agriculture, Banking and Financial Institutions, Business and other services, Commodity Aid and General Program Assistance, Emergency Assistance and Reconstruction, Forestry, Industry, Mineral Resources and mining services, Trade policy and Regulation.

- **To enhance engagement of the private sectors in the development process of the country**, CIDA Canada, DFID, European Union and IDA have disbursed million USD of 1.3, 13.4, 11.3, and 37.8 respectively. The objective is to increase access to finance for eligible small and medium enterprises (SMEs) in the country. In addition to this, ADB has disbursed **USD 0.01 million for Institutional Support Project for Public-Private-Partnerships (ISP-PPP)** with the overall objective of supporting the Government of Ethiopia to sustain economic development and inclusive growth through enhanced private investments in economic and social infrastructure. This is particularly to create an enabling environment and build the requisite capacity for private sector participation in infrastructure as a means of boosting private investments in the delivery of infrastructure and other public services for enhanced competitiveness and inclusive growth.
- **USD 168 million was disbursed by development partners¹⁰ to support environment in EFY 2011**, which is in line with the SGD 13¹¹ and GTP II. Tackling climate change is one of the top priorities of the country goal towards reaching lower middle income country status through green path by 2025. Encouraging progress and performances have been achieved in terms of mainstreaming climate change objectives into national development plan and delivering desired results in the last few years. Yet lots of work remains to strengthen this effort and ensure achievement of long term goals and sustainability of these success stories.

The CRGE strategy recognizes the necessity of holistically addressing development and climate objectives. It focuses on four key areas:

- improving crop and livestock production practices for higher food security and farmer income while reducing emissions;
- protecting and re-establishing forests for their economic and ecosystem services, including as carbon stocks;
- expanding electricity generation from renewable sources of energy for domestic and regional markets; and
- Advancing to modern and energy-efficient technologies in transport, industrial sectors and buildings.
- USD 81.5 million was disbursed to support gender equality in the country in EFY 2011. Support for gender equality is one of the priority cross cutting issues that development partners are support the goverment effort

Public Private Partnership (PPP)

The Ethiopian economy requires a significant amount of additional financing despite a continued increase in external development financing. International Development Cooperation is one of the focus areas to implement the home grown reform agenda. Mobilizing resource for the economic reform agenda requires an integrated mix of leveraging traditional source of financing and identifying new ones. Blended finance is one important approach to mobilize new sources.

The Ministry of Finance has designed and started implementing the Public Private Partnership program to realize the government's partnership with the private sector, which is new in its kind for the country. Thus, to fill the gap in infrastructure financing, the government has started involving the private sector in partnership with the government. Currently, PPP framework has started being implemented and two solar projects, Gad and Dicheto, each with total cost of USD 150 million are signed to be implemented in Somali and Afar region.

10 The disbursement includes funds disbursed for bilateral CRGE project/program implementation (include funds which didn't channel through MOF for CRGE project implementation.)

11. SGD 13- Take urgent action to combat climate change and its impacts.



A lot of achievements are registered through development cooperation in the country. This section presents achievements in one of the pool fund program, Water, Sanitation, and Hygiene, which is in line with SDG 6: Ensure availability and sustainable management of water and sanitation for all.

One WASH National Program (OWNP) is one of the multi donor funded projects. It is financed by the Government of Ethiopia and Development Partners (AfDB, DFID, World Bank, UNICEF and Finland) . The program integrates: MOH, MOE, MOWE and MoF. A total budget of USD 487.2 million was allocated for the period EFY 2007 to EFY 2011 (9.5 % from government and 90.5% from development partners).

The program development objective is “Increased access to improved water supply and sanitation services for residents in participating Woredas, towns and communities in Ethiopia”. It advocates for one plan, one budget, one reporting system and

one Consolidated WaSH Account. The program has four components:

- I. Rural WaSH,
- II. Urban WaSH,
- III. Institutional WaSH and
- IV. Program management and capacity building

During the five year period, EFY 2007-2011:

- Under Rural WASH component for Safe Rural Water Supply - a total of 17,335 water supply schemes were constructed (15,089-new, 214-expansion and 2032- rehabilitation). This has provided access to safe water to 3.9 rural people and for Sanitation and Hygiene- 1,946,659 HH's latrines constructed (1,221,638-new and 725,021- rehabilitation), which has benefited 9.3 million rural communities.

Under Urban WASH component

- 37 small towns water supply system is constructed (369,140 individuals are benefited), additional 48 are under construction and 32 under design stage.
- 2 medium towns water supply system is constructed (74,200 peoples are benefited), additional 8 are under construction and 10 on design.
- 379 public & communal latrines (199 public & 180 communal) constructed. 71,146 and 6746 people are benefited from public and communal latrine respectively.

Under Institutional WASH

- 3,440 sanitary facilities and 1,756 water supply facilities constructed for schools.
- A total of 3,108 latrine and 1,920 water supply facilities is constructed for health centers/posts

As the first joint program in WASH area ,OWASH phase I has registered good result with the challenges faced in the course of project implementation. The program is extended until EFY 2012(2019/2020) to complete the remaining activities.

Focusing challenges and lessons of OWASH Phase I program and directives and indicators of GTP II, OWASH phase II is on preparation. The new Program looks beyond GTP II to establish sector reform and towards meeting SDGs by 2030. The long-term objective of OWNPN Phase II is to achieve universal, sustainable, climate resilient and equitable access to safe and affordable water for all along with improved, low environmental impact, sanitation by 2030. The short-term objective of the Program is to achieve increased and sustained coverage of water supply and sanitation in rural and urban areas with basic Water supply and Sanitation(WSS) service levels in Ethiopia in line with the GTP II targets.

Aid Effectiveness

The Global Partnership for Effective Development Co-operation (GPEDC) is a unique multi-stakeholder platform to advance the effectiveness of development efforts by all actors in delivering results that are long-lasting and contribute to the achievement of the SDGs, including the commitment to leave no one behind¹².

GPEDC monitoring survey supports in tracking the implementation of effective development co-operation commitments, aimed at implementing four development effectiveness principles – country ownership, focus on development results, inclusive partnerships and enhancing transparency & mutual accountability.

Ethiopia is one of the 86 countries that voluntarily participated in 2018 GPEDC monitoring survey. The exercise is carried out for the 3rd time. About 30 Development Partners¹³ that have development cooperation in the country, including one philanthropic institution have provided their input at national level. The results of the monitoring survey are presented in the next section. The result indicates where progress has been made and where challenges remain. It also informs how governments and their partners can strengthen their collective action towards achievement of the GTP II and 2030 Agenda for Sustainable Development.

Focus on Result

The Government has prepared its GTP II in line with Sustainable Development Goals (SDGs) and Agenda 2063 to achieve its goal of reaching middle – income status by 2025. This continues to guide development partners' support and engagement with Government in order to ensure that no one is left behind.

Country's leadership in establishing and defining its own results frameworks, and monitoring and evaluation systems are fundamental aspects of the principles of country ownership and results orientation¹⁴. 2018 GPEDC result¹⁵ indicates that the quality of national development plan of Ethiopia is 95%, which is high when compared to LDCs (79%). High quality, inclusive and results-oriented development strategies are critical for a country ownership over its development and the implementation of the 2030 Agenda and the Sustainable Development Goals (SDGs).

The government strategic plan defines government priorities, has targets and associated indicators, includes budget information and has annual progress report. The plan aligns with SDGs, it is referenced at strategic, goal and target level but not at indicator level.

2018 GPEDC
Monitoring Survey
Results

95%

Quality of national
development plan

79%

Total funds disbursed
as planned

31%

Use of Country
System

82%

Development
partners' interventions
alignment

54%

3-5 year expenditure
plans shared with the
government

12. Source 2018 GPEDC guideline

13. Annex 6 provide list of development partners that participated in 2018 GPEDC monitoring exercise by providing their respective agency input at national level.

14. OECD-UNDP, 2016

15. <http://effectivecooperation.org/monitoring-country-progress/country-and-territory-monitoring-profiles/> provides 2018 GPEDC result

The overall, development partners interventions alignment with the country priorities and country-owned results frameworks is 82%, which is above the average result for LDCs (66%).

- 83% of development partner's interventions objectives were drawn government results frameworks, it is above the LDCs score (83%) 97% 2016
- 78% of result indicators were taken from country result framework, it is above the LDCs score (63%)—79% in 2016
- 73% of indicators relay on data provided by country monitoring system, it is above the LDCs score (52%)—67% in 2016
- 70% of interventions evaluation is joint evaluation with government, it is above the LDCs score (60%)—80% in 2016

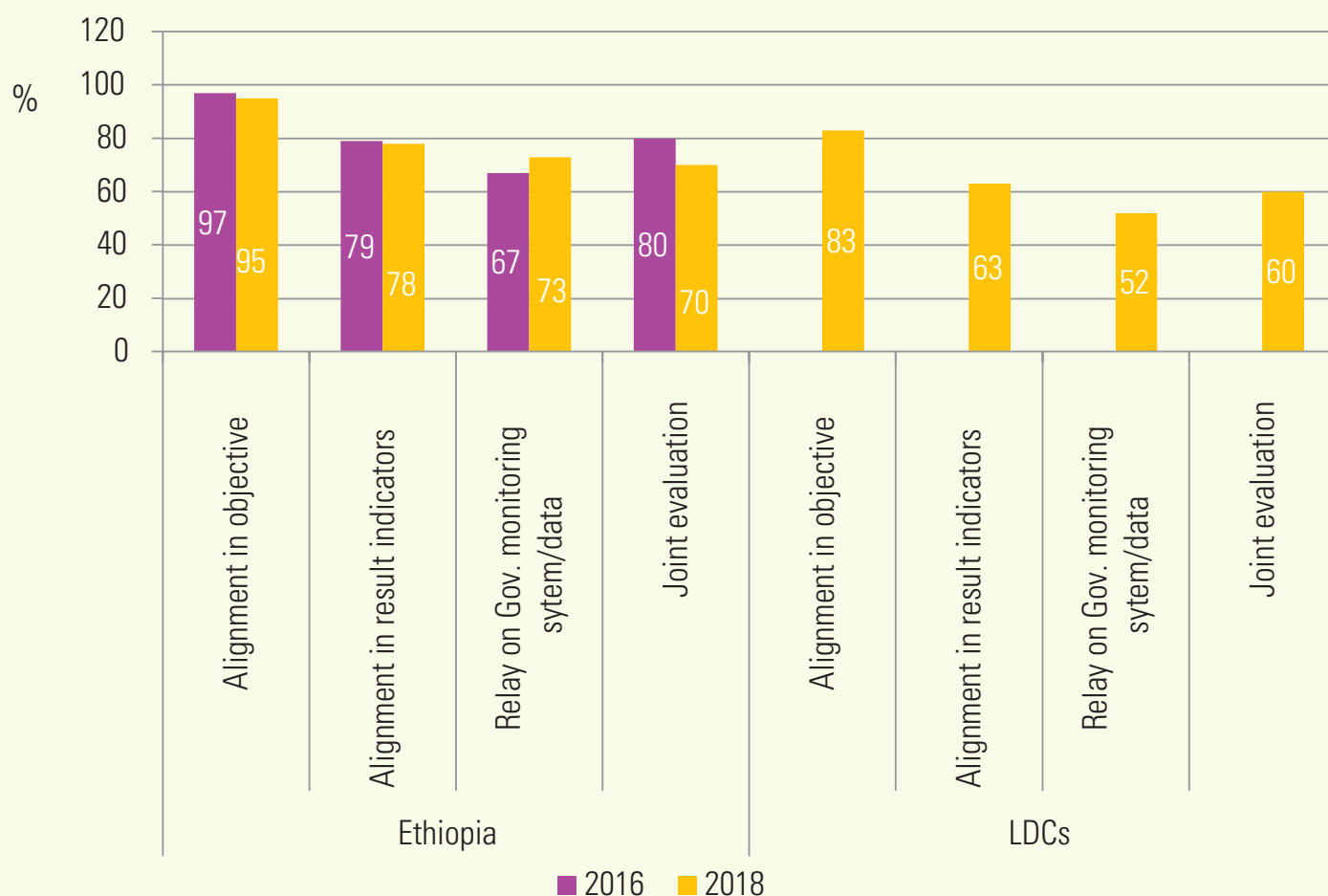


Figure 8: Trends of Development Partners Alignment



Ownership of development priorities by the government- partnership for development can only succeed if it is led by the government.

Forward visibility of development Partners

Predictable development co-operation could help government to plan and manage its development policies and programs with better effectiveness. The 2018 GPEDC result indicates that:

- 79% of the total funds were disbursed as planned, the result is below LDCs but has improved when compared to 2016 result.
- 54% of the total funds were reflected in the rolling 3-5 year expenditure plans shared with the government. The result is below LDCs and global result but has improved when compared to 2016 result.

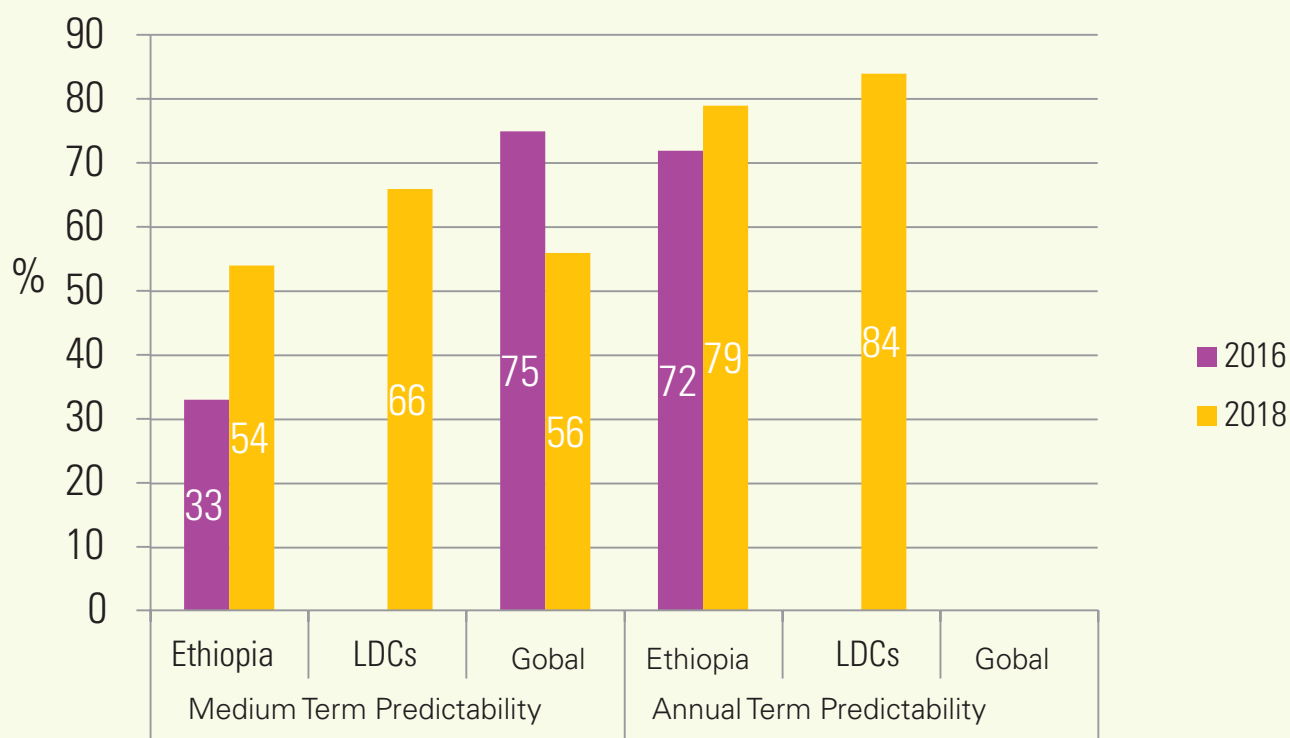


Figure 9: Development Partners Annual and Medium Term Predictability

The result indicates that development partners need to make further effort to provide forward looking information on development cooperation to create conducive environment for planning and budgeting of the country.

Development partner's use of country system

The overall use of country public financial management and procurement systems has declined. Ethiopia has registered an overall decrease in the three elements measured by this indicator: financial reporting; national auditing; and use of national procurement systems. An average of 31% of total ODA used the country's PFM and procurement systems compared to 45% in 2018 and 51% in 2013. The 31% total use of country systems represents an average of the 4 elements listed below.

- **Budget execution** is 43% it is below LDCs (49%) but improved compared to 2016 result (25%).

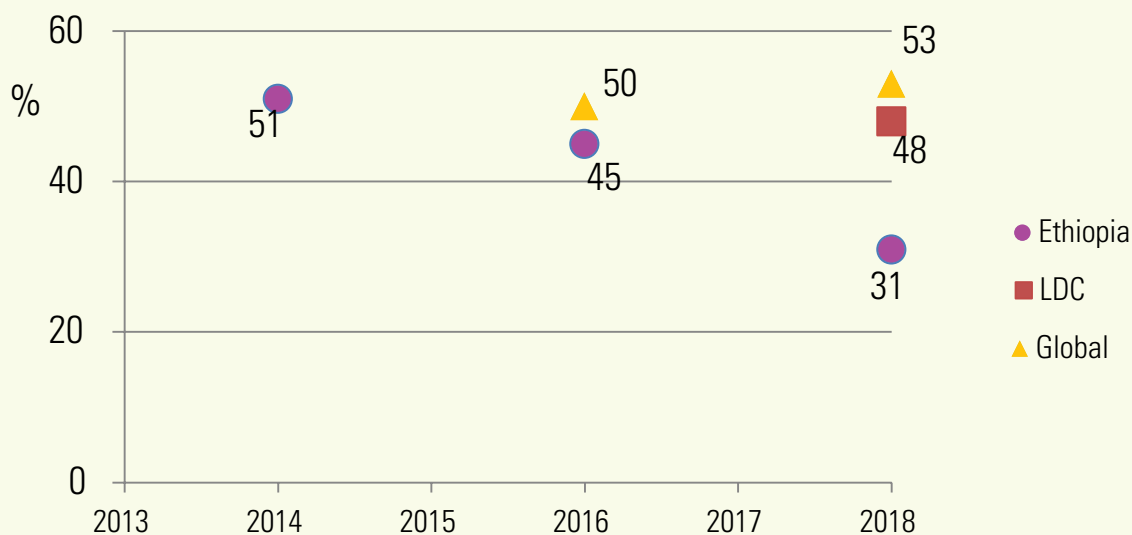


Figure 10: Trend of Development Partners Use of Country System

- **Financial Reporting** is 26%, it is below LDCs (46%) and declined from 2016 result (42%)
- **Auditing** is 32% and it is below LDCs (52%) and has declined from 2016 result (76%)
- **Procurement System** is 24%, it also below LDCs (45%) and has declined from 2016 result (33%)
- **Transparency and Mutual Accountability**

Mutual accountability underpins the efforts of development actors to meet joint commitments, improve how they work together, and increase their development effectiveness. Mutual accountability mechanisms are made up of multiple, reinforcing components that can help enhance transparency and accountability at country level.

- Ethiopia is not considered to have effective inclusive mutual assessment reviews¹⁶. As per the result of 2018 GPEDC monitoring, among the five components which characterizes the presence of inclusive mutual assessment reviews in the country: (i) a policy framework that defines the country's development co-operation priorities; (ii) targets for the country and its development partners; (iii) regular joint assessment against those targets; (iv) active involvement of other stakeholders; and (v) public availability of the results of these reviews, only two components are in place: inclusive assessments, which involve non state actors and on time & publicly availability of results of assessments.
- Ethiopia is approaching to meet indicator 8: countries have systems to track and make public allocations for gender equality and women's empowerment (sdg 5c). The country has met or put in place two criteria: the presence of gender polices and transparent information on resources allocation. It remains a concrete effort to meet the third criteria, the presence of gender responsive PFM system.
- Additionally, 71% of development partners¹⁷ report through one or more of these systems and aid management system is in place.
- The share of development co-operation recorded on budgets subject to parliamentary scrutiny decreased from 63% in 2016 to 44%¹⁸ in 2018. The full inclusion of development co-operation flows on the approved national budget facilitates scrutiny by parliaments and accountability to the public, allowing for greater national ownership of development efforts. This indicator also serves as an indication of whether development partners and governments are effective in linking development co-operation with domestic policies and programmes.

16. A country is considered to have effective mutual assessment reviews in place when at least four out of five key elements are present.

17. it is calculated by dividing the number of development partners working in the country that are reflected in a country's management information system or other data management tools by the total number of development partners working in the country

18. Where the funds recorded in the partner country's budget are smaller than the disbursements planned by its development partners at the outset of the reporting year of reference, the indicator is calculated by dividing the funds recorded in the budget by the funds scheduled for disbursement.

- Where the funds recorded in the budget are larger than the scheduled disbursements, the indicator is calculated by dividing the difference between recorded and scheduled by the funds recorded in the budget. This value represents what is beyond schedule



photo credit: Binyam Teshome



Annexes

Annexes

Annex 1: Framework Agreements

No.	Donor	Framework agreement	Period	Amount allocated	Focus area
1	WB	Country Partnership Framework	2018-2022		<p>Focus Area 1: Promote Structural and Economic Transformation through Increased Productivity</p> <p>Objective:</p> <ul style="list-style-type: none"> 1.1 Enhanced business and investment climate, notably access to finance for MSMEs 1.2 Increased access to reliable energy supply 1.3 Improved agricultural productivity and commercialization 1.4 Improved connectivity and enhanced regional growth and secondary cities 1.5 New approaches for sustainable infrastructure financing and debt management adopted <p>Focus Area 2: Building Resilience and Inclusiveness</p> <p>Objective</p> <ul style="list-style-type: none"> 2.1 Improved sustainability and effectiveness of safety nets 2.2 Improved equity and utilization of quality health services 2.3 Increased access to improved water and sanitation 2.4 Improved basic education learning outcomes 2.5 Improved early childhood nutrition and early learning outcomes 2.6 Increased access to services and job opportunities for refugees and host communities 2.7 Enhanced management of natural resources and climate risks <p>Focus Area 3: Supporting Institutional Accountability and Confronting Corruption</p> <p>Objective</p> <ul style="list-style-type: none"> 3.1 Increased capacity and improved governance in service delivery 3.2 Strengthened citizen engagement and holding government entities accountable 3.3 Improved domestic statistical capacity for enhanced evidence-based policy making and monitoring

No.	Donor	Framework agreement	Period	Amount allocated	Focus area
2	ADB		2016-2020	UA 620 million	<p>Main focus area: Infrastructure and governance:</p> <p>contributes to green growth in the six core areas such as:</p> <ul style="list-style-type: none"> • women and youth employment • Green House Gas (GHG) emissions • water use • biodiversity • resource use efficiency and • waste management <p>food security, regional integration, skills development and ICT will be mainstreamed as crosscutting</p>
3	EU		2014-2020	Euro 745 million	<p>Focus on Four sectoral Intervention</p> <ol style="list-style-type: none"> 1. Sustainable Agriculture and Food Security 2. Health 3. Roads and Transition to Energy 4. Civil Society and Synergetic governance <p>Sustainable Agriculture and Food security</p> <p>Objective 1: Increase agricultural production, productivity and improve marketing</p> <p>Objective 2 Enhance participatory natural resources conservation and sustainable land management</p> <p>Objective 3 Improve resilience and long –term nutrition including through LRRD and safty nets/social protection approaches</p> <p>Health</p> <p>Objective 1: Further strengthen for universal coverage and quality of health.</p> <p>Objective 2; Contribute to the improvement of social and environmental conditions affecting health outcomes.</p>
4	Netherlands		2015-2020		<ul style="list-style-type: none"> ✓ Agriculture and food security ✓ sexual and reproductive health ✓ gender ✓ rule of law and economic governance ✓ water, sanitation and environment ✓ capacity building through scholarship and knowledge exchange

No.	Donor	Framework agreement	Period	Amount allocated	Focus area
	Czech Republic		2018-2023		<ul style="list-style-type: none"> ✓ Agriculture and rural development ✓ sustainable management of natural resources and ✓ humanitarian assistance and resilience
	Germany		2017-2021		<ul style="list-style-type: none"> ✓ Education ✓ Agriculture and Food Security ✓ Conservation and Sustainable Use of Natural Resources (Biodiversity) ✓ Migration ✓ Drought Response ✓ Climate Change ✓ Transparency
	Italy		2017-2019		<ul style="list-style-type: none"> ✓ Agro-industrial Development ✓ Basic Services ✓ Governance and Migration ✓ Gender and Nutrition ✓ Cross-cutting issues
	Denmark		2018-2022		<ul style="list-style-type: none"> ✓ Market-drive value chain development ✓ Improved food security and asset creation ✓ Improved and climate resilient livelihood ✓ Democratic governance
	Sweden		March 2019 - Dec 2019		<ul style="list-style-type: none"> ✓ Resource financed or contributed to specific project/programmes of development cooperation
	Korea		2019-2020		<ul style="list-style-type: none"> ✓ The economic Development cooperation fund

Annex 2: Commitment Matrix, EFY 2011

	Economic sector	Infrastructure Sector	Good Governance	Multisector/Cross cutting	Service sector	Total
China	Forestry research (58.1)					58.1
Czech Republic					Water supply and sanitation(5)	5
DFID	Productive Safety Net program (PSNP) Via the building resilience (18.9) Financial Policy (Tax system)(45.3) Ethiopia Advisory Facility(85) Job compact (103.7)			economic policy analysis(1.4)	Support to GEQIP-E(142.8) Climate resilience water supply & sanitation(22)	419
Denmark	Agricultural commercialization (53.5) Productive Safety Net and Resilience (45.8) Sustainable livelihood & food security (22.9) Money laundering (2.13) Climate resilience forest livelihood (6.9)		Governance & Democratic participation (3.05)	Gender responsive Democratization(3.05)		137.33
France	Privatization(public policy loan to support economic reform(112.6)					112.6
Germany	Agricultural education(2.3) Biodiversity for forest & Land management (20.2) Biosphere reserve(23.2)				Vocational training (6.8)	52.5
IRISH AID	Productive Safety Net Program (11.8) Seed production(0.57) Agricultural Research(0.23)					12.6
Italy					Sanitation facility in urban areas (25.3)	25.3
JICA					Water supply development with solar system tender(1.7)	1.7
Korea/KOICA/ EXIM Bank	Productivity of dairy farmers(2.65) Ground water irrigation(94)	Power Transmission(170)			Health Care foundation support (14) WASH national program(7)	287.65
Netherlands	Agricultural commercialization(50)			data management ((0.823)	Children hospital construction in AA(40)	90.823
Norway	Resilience land scape and livelihood(21.7)					21.7
SIDA Sweden					Education and research (5.9)	5.9
Switzerland	Feasibility analysis on livestock business(0.26)					0.26

	Economic sector	Infrastructure Sector	Good Governance	Multisector/Cross cutting	Service sector	Total
USAID	improve performance of agriculture sector(5.08)		Governance (0.012)		Basic education(24) Improve quality of health care service (92.8)	121.9
European Union	Agro-industrial development(51.2) Global networking against food crises(4.8) Decentralization of Disaster risk mgt(37.6) Root cause of irregular migration and displaced person(56.8)	Blending for electrification(39.8)	Social Accountability (11.3)		Health and Nutrition(27.9)	229.1
ADB	Agro industrial park (15)			Basic Service Transformation(23)		38
EIB				Women entrepreneurship development(30)		30
IDA	Livelihoods support in pastoralist area(350) Climate action through landscape management(500) Resilience landscape and livelihood (50) General Budget support programativ development policy financing (1200) Resilience landscape & livelihood (50)				Quality of TVET program (150) Water supply and sanitation (300)	2600
FAO	Test control(0.237) Facilitating export of livestock(0.795) irrigation database(0.497) Post harvest mgt(2.9) Value chain mgt(4.7)				Basic health (0.85)	9.979
GAVI					HSS(11.6)	11.6
GF					RSSH (6.4) Tb (14.6) Malaria(26.7)	47.7
UNICEF	Early warning and disaster preparedness(0.608)		Justice for children(0.91) Media outreach(0.06) Violence against children(1.18)	Children(5.15) Birth Registration (5.12)	Basic Education(9.8) Health, nutrition, sanitation & hygiene (23.3) Water supply (8.9)	54.728
UNDP	AGP(0.6)	Biogas & Solar transitioning to sustainable energy (0.557)	Supporting Election for Eth. Democracy (40)	Environment and Climate 2.14		43.297
UN Women				women empowerment (0.481)		0.481

	Economic sector	Infrastructure Sector	Good Governance	Multisector/Cross cutting	Service sector	Total
UNFPA	Gender base violence in emergency(0.129)		Advocacy policy dialogue(0.18)	M&E (0.291) Data management (0.397) Adolescent Youth and women(0.93)	Family planning-Reproductive health-maternal health(8.5)	14
WFP					Child fee (2.1) School feeding (3.9)	6
Total	3113.3	210.357	56.7	76.355	980.55	4437

Annex 3: Aid Dependency Trend

Indicators or Aid Dependency	EFY 2003	EFY 2004	EFY 2005	EFY 2006	EFY 2007	EFY 2008	EFY 2009	EFY 2010	EFY 2011
ODA/GDP*100	8.5	5.9	6.2	5.9	4.4	4.2	3.7	4.1	4.2
ODA per capita ¹	33.6	30.9	34.9	37.8	31.8	34.6	32.2	36	41
ODA/GNI*100	8.5	5.9	6.3	5.9	4.4	4.3	3.8	4.1	4.2
ODA/Gross capital formation ²	26.4	15.9	18.3	15.6	11.1	11.4	9.5	11.9	11.9
Per capita income(USD)	395.6	521.2	557.4	636.6	721.8	812.2	870.8	878.7	978.3

1 ODA per capita is calculated using midyear population taken from National economic Account

2 ODA/Gross Capital formation indicates reliance on ODA to support gross fixed capital formation (i.e., new value added in an economy) indicates the extent to which governments need external rather than domestic resources to fund growth-enhancing investments.

Annex 4: Disbursement by Development Partners (EFY 2011 Vs 2010) in million USD

	Development Partners	EFY 2010 Actual Disbursements					EFY 2011 Actual Disbursements				
		Grant	In-kind	Loan	Technical Assistance	Total	Grant	In-kind	Loan	Technical Assistance	Total
Bilateral non Eu Members	CIDA Canada	38.10	-	-	-	38.10	32.25	-	-	-	32.25
	China	-	-	257.40	-	257.40	7.22	-	-	-	7.22
	India	-	-	-	-	-	-	-	1.34	-	1.34
	JICA	8.13	-	-	9.90	18.03	5.55	-	70.98	114.39	190.92
	Korea/KOICA/EXIM Bank	11.42	-	-	-	11.42	3.79	-	15.62	-	19.41
	Kuwait	-	-	-	-	-	-	-	0.90	-	0.90
	New-Zealand	-	-	-	-	-	0.01	-	-	-	0.01
	Norway	-	-	-	-	-	25.34	-	-	-	25.34
	Swetherland	-	-	-	-	-	0.04	-	-	-	0.04
	USAID	220.80	-	-	-	220.80	238.50	-	-	-	238.50
	Bilateral non Eu Member Total	278.45	-	257.40	9.90	545.75	312.70	-	88.85	114.39	515.94
Bilateral EU member	Austria	0.00	-	-	-	0.00	2.10	-	-	-	2.10
	Czech Republic	6.87	-	-	-	6.87	64.55	-	-	-	64.55
	DFID	297.52	-	-	93.84	391.36	261.74	-	-	76.72	338.46
	Denmark	16.32	-	-	-	16.32	0.08	-	-	-	0.08
	Finland	13.30	-	-	-	13.30	15.21	-	-	-	15.21
	France	0.20	-	26.39	-	26.59	0.70	-	20.32	-	21.02
	Germany	48.41	-	-	3.86	52.27	14.17	-	-	51.10	65.27
	IRISH AID	20.41	-	-	-	20.41	20.62	-	-	-	20.62
	Italy	2.94	-	20.31	-	23.26	0.17	-	5.59	-	5.76
	Netherlands	49.89	-	-	-	49.89	35.72	-	-	-	35.72
	SIDA Sweden	4.15	-	-	-	4.15	4.81	-	-	-	4.81
	Spain	1.18	-	-	-	1.18	1.14	-	-	-	1.14
	Bilateral EU member Total	461.21	-	46.70	97.70	605.61	421.02	-	25.91	127.82	574.74

	Development Partners	EFY 2010 Actual Disbursements					EFY 2011 Actual Disbursements				
		Grant	In-kind	Loan	Technical Assistance	Total	Grant	In-kind	Loan	Technical Assistance	Total
European Union		189.71	-	-	-	189.71	157.57	-	-	-	157.57
Total EU Countries		650.92	-	46.70	97.70	795.33	578.59	-	25.91	127.82	732.32
IDA	ADB	10.21	-	213.32	-	223.52	91.08	-	93.04	-	184.11
	BADEA	-	-	12.86	-	12.86	-	-	5.34	-	5.34
	EIB	-	-	11.66	-	11.66	-	-	11.38	-	11.38
	IDA	282.17	-	1,153.88	-	1,436.05	1,038.04	-	1,267.71	-	2,305.75
	IFAD	5.37	-	51.75	-	57.11	1.19	-	39.67	-	40.86
	OFID	-	-	19.95	-	19.95	-	-	11.53	-	11.53
	IFIs Total	297.74	-	1,463.41	-	1,761.15	1,130.31	-	1,428.66	-	2,558.97
UN Agencies	FAO	10.93	-	-	2.08	13.01	12.15	-	-	-	12.15
	GAVI	5.86	-	-	-	5.86	11.60	-	-	-	11.60
	Global Fund	102.84	-	-	-	102.84	51.12	-	-	-	51.12
	UNICEF	145.39	-	-	-	145.39	84.97	-	-	-	84.97
	UNDP	21.62	-	-	-	21.62	18.91	-	-	-	18.91
	UN Women	-	-	-	-	-	0.13	-	-	-	0.13
	UNFPA	9.13	-	-	-	9.13	7.33	-	-	-	7.33
	WFP	6.14	90.10	-	-	96.24	2.97	6.02	-	-	8.99
	UN Agencies Total	301.91	90.10	-	2.08	394.09	189.18	6.02	-	-	195.20
Grand Total		1,529.02	90.10	1,767.50	109.69	3,496.32	2,210.78	6.02	1,543.41	242.21	4,002.42

Annex 5: Disbursement to Non-Governmental Organization EFY 2011(in million USD)

	Humanitarian	Development	Total
Austria		0.1	0.1
CIDA Canada		15.4	15.4
DFID	33.9	3.6	37.5
Germany	1.6	2.3	3.9
Irish Aid	13.1	4.3	17.4
Italy	1.14	4.2	5.3
Netherlands		6.3	6.3
Spain		0.1	0.1
USAID	114.6	38.8	153.4
EU		1.7	1.7
Total	164.3	76.8	241.1

Annex 6: List of Development Partners who provided input at national level for 2018 GPEDC monitoring survey

1	ADB	16	Spain
2	Austria	17	Sweden
3	BADEA	18	UN Women
4	Czech Republic	19	United Kingdom
5	Denmark	20	UNICEF
6	Finland	21	UNDP
7	FAO	22	UNFPA
8	France	23	United States
9	Germany	24	WFP
10	IFAD	25	WB
11	ILO	26	European Union
12	Italy	27	WHO
13	Japan	28	Ireland
14	UNAIDS	29	UNIDO
15	South Korea	30	GAVI

Annex 7: Distribution of Disbursement by Development partners and by Sectors EFY 2011(in million USD)

Donor Group	Donor Agency	OECD/DAC Sector	Funding												Totals
			Fiscal Year 2000	Fiscal Year 2001	Fiscal Year 2002	Fiscal Year 2003	Fiscal Year 2004	Fiscal Year 2005	Fiscal Year 2006	Fiscal Year 2007	Fiscal Year 2008	Fiscal Year 2009	Fiscal Year 2010	Fiscal Year 2011	
BILATERAL Group	Austria	AGRICULTURE	4.0	2.6	2.7	2.1	2.0	0.3	6.4	6.1	2.4	2.3	-	0.4	31.5
		ENERGY GENERATION AND SUPPLY	-	-	-	0.0	-	-	-	-	-	-	-	-	0.0
		FORESTRY	-	-	-	-	-	-	-	-	-	-	-	-	-
		GOVERNMENT AND CIVIL SOCIETY	-	-	0.3	0.6	-	-	-	-	0.5	0.5	-	1.7	3.7
		HEALTH	5.0	0.5	2.3	0.5	0.8	-	-	-	-	-	-	-	9.0
		MULTISECTOR/CROSS-CUTTING	-	4.2	-	1.7	2.4	3.9	3.3	4.4	2.0	-	0.0	-	22.0
			9.0	7.3	5.3	5.0	5.2	4.3	9.7	10.6	4.9	2.8	0.0	2.1	66.3
	CIDA Canada	AGRICULTURE	0.0	4.8	57.6	50.5	47.4	78.0	70.2	33.1	27.9	13.7	21.6	10.7	415.6
		BUSINESS AND OTHER SERVICES	-	-	-	-	-	-	-	-	-	1.4	1.3	1.4	4.0
		EDUCATION	-	-	-	-	-	-	0.6	2.1	0.5	1.5	1.4	4.1	10.3
		EMERGENCY ASSISTANCE AND RECONSTRUCTION	-	-	-	-	-	-	-	-	-	-	-	0.4	0.4
		GOVERNMENT AND CIVIL SOCIETY	-	-	-	6.4	2.8	1.5	-	-	-	-	-	2.2	13.0
		HEALTH	-	-	-	-	-	-	-	-	-	9.0	8.6	7.7	25.4
		MULTISECTOR/CROSS-CUTTING	1.6	0.6	0.8	1.3	3.7	8.0	6.0	3.7	4.2	2.8	5.2	5.7	43.6
		POPULATION POLICIES/PROGRAMMES AND REPRODUCTIVE HEALTH	-	-	-	-	-	-	-	-	-	-	-	-	-
		TRADE POLICY AND REGULATIONS	-	-	-	-	-	2.4	3.8	1.2	0.7	0.7	-	-	8.8
		WATER SUPPLY AND SANITATION	-	-	-	-	0.8	0.5	-	-	-	-	-	-	1.2
			1.6	5.4	58.3	58.2	54.7	90.5	80.6	40.1	33.4	29.1	38.1	32.2	522.2
	China	AGRICULTURE	-	-	-	-	-	0.7	0.9	0.6	0.8	-	-	-	3.1
		EDUCATION	-	-	-	-	-	-	2.2	2.9	-	-	-	-	5.1
		EMERGENCY ASSISTANCE AND RECONSTRUCTION	-	-	-	-	-	-	-	-	-	-	-	7.2	7.2
		ENERGY GENERATION AND SUPPLY	-	-	-	17.6	119.8	96.4	113.0	117.1	90.1	33.3	212.8	-	800.0
		INDUSTRY	-	-	-	-	-	-	-	-	-	-	-	-	-
		MULTISECTOR/CROSS-CUTTING	-	-	-	7.2	-	2.0	-	-	-	-	-	-	9.2
		TRANSPORT AND STORAGE	-	-	1.3	87.0	74.3	120.0	25.7	81.2	132.2	69.4	44.6	-	635.6
		WATER SUPPLY AND SANITATION	-	-	-	-	-	30.0	38.3	85.0	-	-	-	-	153.3
			-	-	1.3	111.7	194.1	249.1	180.1	286.8	223.1	102.7	257.4	7.2	1,613.5
	Czech Republic	AGRICULTURE	-	-	-	-	0.0	0.1	0.0	0.3	37.4	64.0	4.8	63.2	169.8
		EDUCATION	-	-	-	-	-	0.0	0.1	1.1	0.0	0.4	0.3	0.6	2.4

Donor Group	Donor Agency	OECD/DAC Sector	Funding												Totals
			Fiscal Year 2000	Fiscal Year 2001	Fiscal Year 2002	Fiscal Year 2003	Fiscal Year 2004	Fiscal Year 2005	Fiscal Year 2006	Fiscal Year 2007	Fiscal Year 2008	Fiscal Year 2009	Fiscal Year 2010	Fiscal Year 2011	
		HEALTH	-	-	-	-	-	0.0	0.4	0.1	-	0.3	0.1	0.2	1.0
		MINERAL RESOURCES AND MINING	0.1	-	-	-	-	0.0	-	0.0	-	-	-	-	0.1
		WATER SUPPLY AND SANITATION	-	-	-	-	1.4	0.0	-	0.4	0.0	0.6	1.8	0.6	4.8
			0.1	-	-	-	1.4	0.2	0.5	1.9	37.5	65.3	6.9	64.6	178.2
	DFID	AGRICULTURE	54.4	68.9	33.6	77.8	94.2	75.1	25.6	12.3	168.3	84.9	207.2	158.8	1,061.2
		BANKING AND FINANCIAL SERVICES	-	-	-	-	-	-	-	-	-	-	-	0.2	0.2
		BUSINESS AND OTHER SERVICES	0.2	-	-	-	-	0.4	6.5	7.1	8.3	10.5	12.4	13.4	58.6
		COMMUNICATIONS	-	0.0	0.1	-	-	-	-	-	-	-	-	-	0.1
		EDUCATION	-	3.4	0.5	9.6	81.4	40.9	61.3	83.3	55.7	18.5	4.5	22.4	381.5
		GOVERNMENT AND CIVIL SOCIETY	5.4	2.7	1.0	6.3	6.7	5.6	7.6	2.1	0.8	0.4	0.0	0.1	38.7
		HEALTH	-	8.2	29.4	52.6	0.9	160.1	283.1	112.5	57.3	62.7	116.4	96.2	979.4
		INDUSTRY	-	-	-	-	0.8	2.4	-	-	-	7.3	16.7	32.6	59.9
		MULTISECTOR/CROSS-CUTTING	145.5	123.1	104.5	130.8	148.2	226.5	269.1	173.6	70.2	9.6	4.2	0.5	1,405.7
		TRANSPORT AND STORAGE	3.0	2.4	2.5	0.1	0.3	-	-	-	-	-	-	-	8.3
		WATER SUPPLY AND SANITATION	20.4	15.3	18.6	55.1	8.6	0.0	14.6	51.2	25.3	29.0	30.0	14.2	282.3
			228.9	224.0	190.1	332.3	341.2	511.0	667.8	442.2	385.7	222.9	391.4	338.5	4,276.0
	Denmark	AGRICULTURE	-	-	-	-	-	-	-	-	-	-	8.0	-	8.0
		GOVERNMENT AND CIVIL SOCIETY	-	-	-	-	-	-	-	-	-	-	-	0.0	0.0
		MULTISECTOR/CROSS-CUTTING	-	-	-	-	-	-	-	-	-	-	8.4	0.0	8.4
		TRADE POLICY AND REGULATIONS	-	-	-	-	-	-	-	-	-	-	-	0.1	0.1
			-	-	-	-	-	-	-	-	-	-	16.3	0.1	16.4
	Finland	AGRICULTURE	-	-	-	-	3.0	3.8	6.8	3.0	5.8	3.8	2.9	4.1	33.3
		EDUCATION	0.1	0.6	10.8	-	11.6	6.9	5.9	5.7	6.0	7.8	4.2	5.5	65.1
		GOVERNMENT AND CIVIL SOCIETY	-	-	-	-	-	-	-	-	-	-	-	0.0	0.0
		WATER SUPPLY AND SANITATION	2.4	7.0	11.7	16.1	8.5	7.3	9.3	3.2	6.4	3.0	6.2	5.5	86.7
			2.4	7.6	22.5	16.1	23.1	18.0	22.1	12.0	18.2	14.6	13.3	15.2	185.1
	France	AGRICULTURE	0.7	14.4	0.8	0.1	0.0	-	-	-	-	-	-	-	16.0
		EDUCATION	0.7	0.5	1.0	0.5	0.2	0.1	-	-	-	-	-	-	3.0
		ENERGY GENERATION AND SUPPLY	-	-	24.5	-	-	23.7	11.5	5.8	13.2	-	25.2	20.3	124.2
		GOVERNMENT AND CIVIL SOCIETY	0.8	0.6	0.1	0.0	0.3	0.1	0.6	0.1	-	-	-	0.0	2.6
		MULTISECTOR/CROSS-CUTTING	0.4	0.6	0.5	0.9	1.0	2.4	1.6	7.5	4.2	1.3	1.4	0.0	21.9

Donor Group	Donor Agency	OECD/DAC Sector	Funding												Totals
			Fiscal Year 2000	Fiscal Year 2001	Fiscal Year 2002	Fiscal Year 2003	Fiscal Year 2004	Fiscal Year 2005	Fiscal Year 2006	Fiscal Year 2007	Fiscal Year 2008	Fiscal Year 2009	Fiscal Year 2010	Fiscal Year 2011	
		HEALTH	-	-	-	-	-	0.0	0.4	0.1	-	0.3	0.1	0.2	1.0
		MINERAL RESOURCES AND MINING	0.1	-	-	-	-	0.0	-	0.0	-	-	-	-	0.1
		WATER SUPPLY AND SANITATION	-	-	-	-	1.4	0.0	-	0.4	0.0	0.6	1.8	0.6	4.8
			0.1	-	-	-	1.4	0.2	0.5	1.9	37.5	65.3	6.9	64.6	178.2
	DFID	AGRICULTURE	54.4	68.9	33.6	77.8	94.2	75.1	25.6	12.3	168.3	84.9	207.2	158.8	1,061.2
		BANKING AND FINANCIAL SERVICES	-	-	-	-	-	-	-	-	-	-	-	0.2	0.2
		BUSINESS AND OTHER SERVICES	0.2	-	-	-	-	0.4	6.5	7.1	8.3	10.5	12.4	13.4	58.6
		COMMUNICATIONS	-	0.0	0.1	-	-	-	-	-	-	-	-	-	0.1
		EDUCATION	-	3.4	0.5	9.6	81.4	40.9	61.3	83.3	55.7	18.5	4.5	22.4	381.5
		GOVERNMENT AND CIVIL SOCIETY	5.4	2.7	1.0	6.3	6.7	5.6	7.6	2.1	0.8	0.4	0.0	0.1	38.7
		HEALTH	-	8.2	29.4	52.6	0.9	160.1	283.1	112.5	57.3	62.7	116.4	96.2	979.4
		INDUSTRY	-	-	-	-	0.8	2.4	-	-	-	7.3	16.7	32.6	59.9
		MULTISECTOR/CROSS-CUTTING	145.5	123.1	104.5	130.8	148.2	226.5	269.1	173.6	70.2	9.6	4.2	0.5	1,405.7
		TRANSPORT AND STORAGE	3.0	2.4	2.5	0.1	0.3	-	-	-	-	-	-	-	8.3
		WATER SUPPLY AND SANITATION	20.4	15.3	18.6	55.1	8.6	0.0	14.6	51.2	25.3	29.0	30.0	14.2	282.3
			228.9	224.0	190.1	332.3	341.2	511.0	667.8	442.2	385.7	222.9	391.4	338.5	4,276.0
	Denmark	AGRICULTURE	-	-	-	-	-	-	-	-	-	-	8.0	-	8.0
		GOVERNMENT AND CIVIL SOCIETY	-	-	-	-	-	-	-	-	-	-	-	0.0	0.0
		MULTISECTOR/CROSS-CUTTING	-	-	-	-	-	-	-	-	-	-	8.4	0.0	8.4
		TRADE POLICY AND REGULATIONS	-	-	-	-	-	-	-	-	-	-	-	0.1	0.1
			-	-	-	-	-	-	-	-	-	-	16.3	0.1	16.4
	Finland	AGRICULTURE	-	-	-	-	3.0	3.8	6.8	3.0	5.8	3.8	2.9	4.1	33.3
		EDUCATION	0.1	0.6	10.8	-	11.6	6.9	5.9	5.7	6.0	7.8	4.2	5.5	65.1
		GOVERNMENT AND CIVIL SOCIETY	-	-	-	-	-	-	-	-	-	-	-	0.0	0.0
		WATER SUPPLY AND SANITATION	2.4	7.0	11.7	16.1	8.5	7.3	9.3	3.2	6.4	3.0	6.2	5.5	86.7
			2.4	7.6	22.5	16.1	23.1	18.0	22.1	12.0	18.2	14.6	13.3	15.2	185.1
	France	AGRICULTURE	0.7	14.4	0.8	0.1	0.0	-	-	-	-	-	-	-	16.0
		EDUCATION	0.7	0.5	1.0	0.5	0.2	0.1	-	-	-	-	-	-	3.0
		ENERGY GENERATION AND SUPPLY	-	-	24.5	-	-	23.7	11.5	5.8	13.2	-	25.2	20.3	124.2
		GOVERNMENT AND CIVIL SOCIETY	0.8	0.6	0.1	0.0	0.3	0.1	0.6	0.1	-	-	-	0.0	2.6
		MULTISECTOR/CROSS-CUTTING	0.4	0.6	0.5	0.9	1.0	2.4	1.6	7.5	4.2	1.3	1.4	0.0	21.9

Donor Group	Donor Agency	OECD/DAC Sector	Funding												Totals
			Fiscal Year 2000	Fiscal Year 2001	Fiscal Year 2002	Fiscal Year 2003	Fiscal Year 2004	Fiscal Year 2005	Fiscal Year 2006	Fiscal Year 2007	Fiscal Year 2008	Fiscal Year 2009	Fiscal Year 2010	Fiscal Year 2011	
		TRADE POLICY AND REGULATIONS	-	-	-	-	-	-	-	-	-	-	-	-	-
		TRANSPORT AND STORAGE	-	-	-	-	6.0	2.4	32.4	0.1	0.1	-	0.0	0.0	41.1
		WATER SUPPLY AND SANITATION	0.9	0.5	3.9	0.8	2.3	1.8	3.2	8.3	3.6	3.8	-	0.6	29.8
			3.5	16.7	30.9	2.3	9.8	30.5	49.4	21.8	21.0	5.1	26.6	21.0	238.6
	Germany	AGRICULTURE	7.1	4.6	5.6	3.5	35.5	50.0	42.4	13.1	13.2	29.5	20.4	48.8	273.8
		BANKING AND FINANCIAL SERVICES	0.3	0.1	0.3	0.2	2.1	1.2	0.1	0.0	0.0	0.0	0.0	-	4.4
		BUSINESS AND OTHER SERVICES	-	-	-	-	-	3.3	3.0	4.1	1.1	0.0	-	-	11.5
		CONSTRUCTION	-	-	-	-	-	-	-	-	-	-	-	-	-
		EDUCATION	1.3	0.7	4.5	1.9	1.7	5.8	6.7	7.8	7.8	12.4	12.1	6.9	69.7
		ENERGY GENERATION AND SUPPLY	-	-	-	-	-	-	-	-	-	-	-	5.8	5.8
		FORESTRY	-	-	-	-	-	-	1.8	0.4	0.4	0.7	0.2	0.2	3.8
		GOVERNMENT AND CIVIL SOCIETY	2.4	1.6	1.0	1.1	1.8	1.9	1.6	1.3	0.1	0.0	-	-	12.8
		HEALTH	-	-	-	-	-	-	-	-	-	-	-	-	-
		INDUSTRY	9.6	22.1	5.0	4.7	5.2	0.3	(0.0)	0.0	-	0.3	0.5	2.6	50.3
		MULTISECTOR/CROSS-CUTTING	5.6	2.8	35.2	17.0	6.4	22.1	3.9	3.8	4.4	8.8	19.0	0.9	129.8
		TRANSPORT AND STORAGE	21.3	4.2	1.4	1.6	1.0	0.0	0.5	0.1	-	-	-	-	30.1
		WATER SUPPLY AND SANITATION	5.5	3.1	2.1	-	0.2	-	0.1	0.0	-	-	-	-	11.1
			53.1	39.3	55.2	30.1	53.9	84.7	60.0	30.6	27.0	51.8	52.3	65.3	603.0
	IRISH AID	AGRICULTURE	0.6	32.7	11.7	-	15.7	0.3	17.3	15.0	13.4	13.2	13.7	13.3	147.0
		EDUCATION	4.1	-	0.2	0.1	0.1	-	-	-	-	-	-	-	4.6
		GOVERNMENT AND CIVIL SOCIETY	0.2	0.3	-	-	-	-	-	0.3	0.2	-	-	0.1	1.1
		HEALTH	1.0	-	3.5	3.2	3.3	2.3	6.3	14.1	0.4	5.5	5.9	6.1	51.8
		MULTISECTOR/CROSS-CUTTING	20.0	21.2	15.7	12.9	14.3	0.1	2.7	1.8	1.3	0.1	0.8	1.2	92.0
		POPULATION POLICIES/PROGRAMMES AND REPRODUCTIVE HEALTH	-	-	-	-	-	-	-	-	0.3	-	-	-	0.3
		TRANSPORT AND STORAGE	-	-	-	-	-	-	-	-	-	-	-	-	-
			25.9	54.2	31.2	16.2	33.5	2.7	26.4	31.2	15.6	18.8	20.4	20.6	296.7
	India	AGRICULTURE	-	36.1	30.0	45.9	84.9	81.1	26.7	24.6	21.9	15.2	-	1.3	367.7
		ENERGY GENERATION AND SUPPLY	31.8	17.4	1.2	1.1	0.3	-	-	-	-	-	-	-	51.9
		INDUSTRY	-	-	42.9	37.8	43.1	19.8	3.8	6.2	2.4	4.9	-	-	161.0
		TRANSPORT AND STORAGE	-	-	-	-	-	-	0.4	-	-	-	-	-	0.4
			31.8	53.5	74.2	84.9	128.3	100.9	30.8	30.8	24.4	20.1	-	1.3	581.0

Donor Group	Donor Agency	OECD/DAC Sector	Funding												Totals
			Fiscal Year 2000	Fiscal Year 2001	Fiscal Year 2002	Fiscal Year 2003	Fiscal Year 2004	Fiscal Year 2005	Fiscal Year 2006	Fiscal Year 2007	Fiscal Year 2008	Fiscal Year 2009	Fiscal Year 2010	Fiscal Year 2011	
	Iran	AGRICULTURE	-	-	-	-	-	-	-	-	-	-	-	-	-
			-	-	-	-	-	-	-	-	-	-	-	-	0.1
	Italy	AGRICULTURE	6.9	0.5	0.0	2.1	4.1	-	0.1	7.6	6.7	1.5	-	-	29.5
		EDUCATION	3.7	12.6	0.5	12.8	0.1	6.2	0.0	3.1	2.5	1.1	2.9	-	45.7
		ENERGY GENERATION AND SUPPLY	122.8	66.8	7.0	0.9	-	-	-	-	-	-	-	-	197.5
		GOVERNMENT AND CIVIL SOCIETY	0.3	1.1	0.0	1.1	0.6	0.0	-	-	-	0.1	-	0.2	3.4
		HEALTH	2.2	4.1	0.7	0.3	6.6	2.5	0.2	4.3	6.5	1.6	3.6	-	32.5
		INDUSTRY	-	-	2.1	1.7	-	0.0	0.8	0.2	-	-	-	-	4.8
		MULTISECTOR/CROSS-CUTTING	0.2	-	11.8	2.5	0.2	1.9	0.0	0.0	4.9	0.1	16.8	5.6	44.0
		TOURISM	0.4	-	-	-	-	-	-	-	-	-	-	-	0.4
		WATER SUPPLY AND SANITATION	-	-	0.1	5.0	0.1	3.1	2.3	0.1	3.8	5.4	-	-	19.7
			136.6	85.1	22.1	26.4	11.7	13.7	3.5	15.3	24.3	9.7	23.3	5.8	377.4
	JICA	AGRICULTURE	4.2	0.8	2.6	9.2	9.3	12.3	13.6	9.5	3.9	2.4	5.5	4.2	77.5
		BUSINESS AND OTHER SERVICES	-	-	-	-	-	-	-	-	-	-	-	-	71.0
		EDUCATION	2.2	6.8	7.5	9.6	9.3	17.7	2.6	2.3	2.1	0.6	2.1	1.2	64.1
		EMERGENCY ASSISTANCE AND RECONSTRUCTION	-	-	-	-	-	-	-	-	-	-	-	1.0	1.0
		ENERGY GENERATION AND SUPPLY	-	-	-	-	-	-	0.7	1.3	0.1	-	-	-	2.2
		GOVERNMENT AND CIVIL SOCIETY	-	-	-	0.8	-	2.4	0.7	-	-	-	-	0.4	4.3
		HEALTH	0.0	-	-	2.4	-	1.9	0.6	2.3	0.0	-	-	-	7.2
		INDUSTRY	-	-	-	1.5	-	1.9	1.2	1.6	0.1	1.5	4.5	2.9	15.2
		MULTISECTOR/CROSS-CUTTING	2.6	8.1	0.8	1.6	3.2	1.8	15.8	6.5	9.7	4.4	5.1	108.3	168.0
		OTHER SOCIAL INFRASTRUCTURE AND SERVICES	-	-	-	-	-	-	-	-	-	-	-	0.7	0.7
		TOURISM	-	-	-	-	-	-	0.7	0.9	0.9	-	-	-	2.6
		TRANSPORT AND STORAGE	13.2	0.9	-	11.2	0.2	28.5	79.4	0.9	6.7	-	0.5	-	141.6
		WATER SUPPLY AND SANITATION	0.9	0.7	2.0	15.2	7.8	6.9	10.0	2.8	2.2	1.1	0.4	1.3	51.4
			23.0	17.5	13.0	51.4	29.8	73.5	125.5	28.2	25.8	9.9	18.0	190.9	606.6
	KOICA	AGRICULTURE	-	-	-	1.6	0.3	0.3	0.9	1.8	2.7	2.9	0.9	0.9	12.3
		EDUCATION	0.0	1.8	2.6	1.5	4.2	9.5	6.4	6.7	12.8	7.5	5.5	2.3	60.8
		ENERGY GENERATION AND SUPPLY	-	-	-	2.8	0.6	-	-	-	-	-	-	-	3.4
		FORESTRY	-	-	-	-	-	-	-	0.0	-	-	-	-	0.0
		HEALTH	-	1.9	3.1	0.3	0.6	1.3	0.9	0.4	8.2	3.9	4.0	0.2	24.8

Donor Group	Donor Agency	OECD/DAC Sector	Funding												Totals
			Fiscal Year 2000	Fiscal Year 2001	Fiscal Year 2002	Fiscal Year 2003	Fiscal Year 2004	Fiscal Year 2005	Fiscal Year 2006	Fiscal Year 2007	Fiscal Year 2008	Fiscal Year 2009	Fiscal Year 2010	Fiscal Year 2011	
		MULTISECTOR/CROSS-CUTTING	-	-	-	-	0.0	2.4	1.5	2.5	0.8	-	0.7	-	7.8
		OTHER SOCIAL INFRASTRUCTURE AND SERVICES	-	-	-	-	-	-	-	0.2	-	-	-	-	0.2
		POPULATION POLICIES/PROGRAMMES AND REPRODUCTIVE HEALTH	-	-	-	-	0.2	0.2	2.2	1.2	3.5	2.5	0.1	0.3	10.3
		SUPPORT TO NON- GOVERNMENTAL ORGANISATIONS	-	-	-	-	-	-	-	-	0.1	-	-	-	0.1
		TRANSPORT AND STORAGE	-	-	-	-	-	-	-	-	-	2.5	-	15.6	18.2
		WATER SUPPLY AND SANITATION	-	0.6	-	-	-	-	-	0.9	3.5	2.8	0.2	0.1	8.1
			0.0	4.3	5.6	6.2	6.0	13.6	11.8	13.7	31.7	22.2	11.4	19.4	146.0
	Kuwait	ENERGY GENERATION AND SUPPLY	6.1	6.4	2.1	8.1	1.5	-	-	-	-	-	-	-	24.3
		TRANSPORT AND STORAGE	-	-	4.1	6.7	4.3	2.6	2.2	6.5	12.8	4.7	-	0.9	44.8
			6.1	6.4	6.2	14.8	5.9	2.6	2.2	6.5	12.8	4.7	-	0.9	69.1
	Netherlands	AGRICULTURE	0.9	-	-	-	16.3	27.4	22.7	23.7	15.3	12.6	13.7	24.1	156.8
		COMMUNICATIONS	-	-	-	-	-	-	-	-	-	-	-	-	-
		EDUCATION	-	-	-	-	-	-	-	-	-	-	-	-	-
		ENERGY GENERATION AND SUPPLY	-	-	-	-	-	-	-	-	-	-	-	-	-
		GOVERNMENT AND CIVIL SOCIETY	-	-	-	-	-	0.3	0.3	0.8	0.2	-	-	0.0	1.6
		HEALTH	-	-	-	-	-	5.7	7.1	14.9	15.9	10.8	11.7	11.0	77.1
		MULTISECTOR/CROSS-CUTTING	1.2	-	-	17.2	17.5	9.1	14.3	6.7	12.3	8.3	24.5	0.6	111.7
		TRANSPORT AND STORAGE	-	-	-	-	-	-	-	-	-	-	-	-	-
			2.2	-	-	17.2	33.9	42.5	44.4	46.1	43.7	31.7	49.9	35.7	347.3
	New-Zealand	GOVERNMENT AND CIVIL SOCIETY	-	-	-	-	-	-	-	-	-	-	-	0.01	0.01
			-	-	-	-	-	-	-	-	-	-	-	0.01	0.01
	Norway	AGRICULTURE	-	-	-	-	-	-	14.5	12.1	-	14.3	-	-	40.9
		EDUCATION	2.1	-	3.7	0.8	1.9	0.5	2.9	0.8	3.3	4.8	-	1.8	22.5
		ENERGY GENERATION AND SUPPLY	-	-	5.2	3.4	0.5	3.6	0.1	-	-	-	-	-	12.8
		FORESTRY	-	-	-	-	-	-	8.5	4.6	-	-	-	0.6	13.7
		GOVERNMENT AND CIVIL SOCIETY	0.1	-	-	-	-	0.3	0.2	-	-	-	-	1.9	2.4
		MULTISECTOR/CROSS-CUTTING	0.6	0.6	-	0.8	0.7	-	-	4.0	-	2.5	-	20.8	30.1
		OTHER SOCIAL INFRASTRUCTURE AND SERVICES	-	-	-	-	-	-	-	-	-	-	-	0.3	0.3

Donor Group	Donor Agency	OECD/DAC Sector	Funding												Totals
			Fiscal Year 2000	Fiscal Year 2001	Fiscal Year 2002	Fiscal Year 2003	Fiscal Year 2004	Fiscal Year 2005	Fiscal Year 2006	Fiscal Year 2007	Fiscal Year 2008	Fiscal Year 2009	Fiscal Year 2010	Fiscal Year 2011	
		TOURISM	-	-	-	-	0.0	-	-	-	-	-	-	-	0.0
			2.8	0.6	8.8	5.0	3.1	4.4	26.1	21.5	3.3	21.6	-	25.3	122.7
	SIDA Sweden	AGRICULTURE	36.9	17.5	8.5	(0.0)	0.0	-	-	-	-	-	0.1	-	63.0
		EDUCATION	14.3	11.8	5.4	8.2	3.7	2.3	-	1.2	-	-	1.4	-	48.4
		EMERGENCY ASSISTANCE AND RECONSTRUCTION	-	-	-	-	-	-	-	-	-	-	-	0.0	0.0
		FORESTRY	-	-	-	-	-	-	-	-	-	-	-	1.5	1.5
		GOVERNMENT AND CIVIL SOCIETY	-	-	-	-	-	-	-	-	-	-	1.3	2.7	3.9
		HEALTH	1.6	-	-	-	-	-	-	-	-	-	-	0.4	2.0
		MULTISECTOR/CROSS-CUTTING	0.2	-	-	0.3	0.6	-	-	-	-	-	1.4	0.2	2.7
		OTHER SOCIAL INFRASTRUCTURE AND SERVICES	-	-	-	-	-	-	-	-	-	-	-	0.0	0.0
			53.0	29.3	13.9	8.5	4.3	2.3	-	1.2	-	-	4.2	4.8	121.6
	Saudi Arabia	ENERGY GENERATION AND SUPPLY	-	-	-	-	-	-	-	-	7.0	2.4	-	-	9.4
		TRANSPORT AND STORAGE	0.2	-	3.8	2.7	0.0	0.5	0.0	0.8	4.3	2.2	-	-	14.5
			0.2	-	3.8	2.7	0.0	0.5	0.0	0.8	11.4	4.6	-	-	23.9
	Spain	AGRICULTURE	-	-	-	-	7.0	-	2.7	0.8	-	3.2	1.2	1.1	16.1
		EMERGENCY ASSISTANCE AND RECONSTRUCTION	-	-	-	1.5	-	-	-	-	-	-	-	-	1.5
		GOVERNMENT AND CIVIL SOCIETY	-	0.6	0.6	0.6	-	-	-	-	-	-	-	-	1.7
		HEALTH	0.3	7.4	7.4	6.3	7.0	11.3	2.0	1.1	-	1.0	-	-	43.8
		MULTISECTOR/CROSS-CUTTING	-	37.1	3.0	12.2	1.9	-	-	-	-	-	-	-	54.1
		TOURISM	-	-	-	2.0	-	-	-	-	-	-	-	-	2.0
		WATER SUPPLY AND SANITATION	-	0.7	1.4	1.3	-	-	-	-	-	-	-	-	3.5
			0.3	45.8	12.3	23.9	15.9	11.3	4.7	1.9	-	4.3	1.2	1.1	122.6
	Switzerland	GOVERNMENT AND CIVIL SOCIETY	-	-	-	-	-	-	-	-	-	-	-	0.04	0.04
		MULTISECTOR/CROSS-CUTTING	-	-	-	-	-	-	-	-	-	5.8	-	-	5.8
		WATER SUPPLY AND SANITATION	-	-	-	-	1.4	2.1	-	-	-	-	-	-	3.6
			-	-	-	-	1.4	2.1	-	-	-	5.8	-	0.0	9.4
	USAID	AGRICULTURE	-	-	-	27.3	27.6	31.4	76.2	166.3	87.4	78.2	73.3	66.8	634.5
		EDUCATION	-	-	-	21.1	21.3	18.3	29.3	29.8	28.1	38.3	24.2	27.3	237.7
		GOVERNMENT AND CIVIL SOCIETY	3.7	0.5	0.7	-	-	0.4	2.7	3.3	10.7	5.4	6.9	11.6	45.9
		HEALTH	-	-	-	80.5	111.5	121.4	129.5	169.1	102.3	125.5	116.5	132.8	1,089.0
			3.7	0.5	0.7	128.9	160.5	171.5	237.7	368.5	228.5	247.3	220.8	238.5	2,007.1

Donor Group	Donor Agency	OECD/DAC Sector	Funding												Totals
			Fiscal Year 2000	Fiscal Year 2001	Fiscal Year 2002	Fiscal Year 2003	Fiscal Year 2004	Fiscal Year 2005	Fiscal Year 2006	Fiscal Year 2007	Fiscal Year 2008	Fiscal Year 2009	Fiscal Year 2010	Fiscal Year 2011	
			584.3	597.5	555.6	941.7	1,117.6	1,429.7	1,583.4	1,411.6	1,172.3	894.9	1,151.4	1,090.7	12,530.6
European Union	European Union	AGRICULTURE	18.6	73.5	59.7	28.2	31.6	2.6	40.0	41.0	1.3	18.6	30.4	48.8	394.3
		BANKING AND FINANCIAL SERVICES	-	-	-	-	-	-	-	-	-	-	-	-	-
		EDUCATION	0.1	3.1	0.5	0.0	-	-	-	-	-	-	-	-	3.8
		EMERGENCY ASSISTANCE AND RECONSTRUCTION	-	12.4	2.5	0.6	0.1	0.0	3.6	12.2	6.0	13.1	5.1	6.0	61.7
		ENERGY GENERATION AND SUPPLY	-	-	-	-	-	-	-	-	-	4.8	-	7.8	12.6
		FORESTRY	-	-	0.2	0.6	2.0	0.2	0.2	0.1	0.0	-	-	-	3.2
		GOVERNMENT AND CIVIL SOCIETY	6.6	2.4	4.6	1.8	2.9	2.4	3.2	1.7	2.4	1.5	0.6	0.7	30.9
		HEALTH	-	-	-	-	-	-	17.8	-	28.2	10.1	82.8	33.6	172.6
		INDUSTRY	0.0	-	-	-	-	-	-	-	-	-	-	-	0.0
		MULTISECTOR/CROSS-CUTTING	83.9	12.6	46.3	31.7	53.0	2.8	51.5	25.5	25.0	8.5	7.1	6.0	353.8
		OTHER SOCIAL INFRASTRUCTURE AND SERVICES	-	-	-	-	-	-	-	3.7	2.6	8.4	2.3	1.2	18.2
		TOURISM	4.6	-	-	-	-	-	-	-	-	-	-	-	4.6
		TRADE POLICY AND REGULATIONS	-	0.7	0.3	1.7	8.0	0.3	0.0	0.2	0.1	3.5	0.2	2.5	17.5
		TRANSPORT AND STORAGE	419.5	49.0	136.8	89.5	2.0	82.0	-	39.6	15.0	27.7	61.4	50.9	973.4
		WATER SUPPLY AND SANITATION	-	3.8	-	2.3	4.8	0.6	-	0.7	4.6	7.2	0.0	-	23.9
			533.3	157.5	251.0	156.4	104.4	90.9	116.3	124.7	85.2	103.4	189.7	157.6	2,070.5
			533.3	157.5	251.0	156.4	104.4	90.9	116.3	124.7	85.2	103.4	189.7	157.6	2,070.5
International Financial Institutions	ADB	AGRICULTURE	7.8	39.7	11.7	19.7	28.4	12.8	2.1	2.8	2.9	8.3	10.2	13.0	159.4
		BANKING AND FINANCIAL SERVICES	7.9	22.1	10.0	1.0	0.2	-	-	-	-	-	-	-	41.1
		BUSINESS AND OTHER SERVICES	-	1.7	-	-	-	-	-	-	-	6.8	-	-	8.5
		EDUCATION	21.8	0.2	-	-	-	-	-	-	-	-	-	-	22.0
		ENERGY GENERATION AND SUPPLY	10.1	32.3	71.9	22.1	52.8	78.6	58.0	22.6	48.1	57.7	45.8	18.2	518.2
		GOVERNMENT AND CIVIL SOCIETY	-	-	-	-	-	-	-	-	-	-	-	0.0	0.0
		HEALTH	2.7	-	-	-	-	-	-	-	-	-	-	-	2.7
		MULTISECTOR/CROSS-CUTTING	57.3	121.8	44.4	114.5	-	86.2	83.2	80.7	82.2	81.6	83.3	84.3	919.5
		OTHER SOCIAL INFRASTRUCTURE AND SERVICES	-	-	-	-	-	-	-	-	0.2	0.1	0.6	0.0	0.9
		TRANSPORT AND STORAGE	27.4	21.9	21.2	30.9	31.9	72.5	53.1	67.7	59.8	53.8	56.7	48.7	545.5
		WATER SUPPLY AND SANITATION	8.5	16.3	22.1	17.2	17.3	9.6	-	-	32.9	11.2	27.1	19.8	181.8
			143.4	256.0	181.3	205.3	130.5	259.7	196.4	173.8	226.0	219.5	223.5	184.1	2,399.4
	BA D EA	BANKING AND FINANCIAL SERVICES	-	-	-	-	-	-	-	-	-	-	-	-	-

Donor Group	Donor Agency	OECD/DAC Sector	Funding												Totals
			Fiscal Year 2000	Fiscal Year 2001	Fiscal Year 2002	Fiscal Year 2003	Fiscal Year 2004	Fiscal Year 2005	Fiscal Year 2006	Fiscal Year 2007	Fiscal Year 2008	Fiscal Year 2009	Fiscal Year 2010	Fiscal Year 2011	
		ENERGY GENERATION AND SUPPLY	1.9	-	1.6	1.2	1.8	0.5	4.1	1.1	2.5	9.5	6.0	3.1	33.2
		MULTISECTOR/CROSS-CUTTING	-	-	-	0.1	0.1	-	-	-	-	-	-	-	0.2
		TRANSPORT AND STORAGE	4.4	6.6	11.3	4.8	3.2	6.3	2.2	0.8	6.2	15.1	6.9	2.3	70.1
		WATER SUPPLY AND SANITATION	0.3	1.1	2.0	0.5	1.1	0.8	0.1	-	0.5	-	-	-	6.2
			6.6	7.7	14.8	6.6	6.3	7.5	6.4	1.8	9.2	24.6	12.9	5.3	109.7
	EIB	BANKING AND FINANCIAL SERVICES	5.5	4.8	10.6	-	-	-	-	-	-	-	11.7	11.4	43.9
		ENERGY GENERATION AND SUPPLY	27.1	24.4	1.3	-	-	-	-	-	-	-	-	-	52.8
		WATER SUPPLY AND SANITATION	-	1.4	0.6	7.0	-	1.3	-	-	-	5.2	-	-	15.5
			32.6	30.7	12.6	7.0	-	1.3	-	-	-	5.2	11.7	11.4	112.3
	IDA	AGRICULTURE	79.1	403.9	162.8	161.8	181.1	290.0	374.7	152.1	507.1	487.3	268.8	457.9	3,526.4
		BANKING AND FINANCIAL SERVICES	2.1	0.2	5.7	-	-	-	-	-	-	0.5	50.4	37.8	96.8
		COMMODITY AID AND GENERAL PROGRAMME ASSISTANCE	-	-	-	-	-	-	-	-	-	-	-	1,193.2	1,193.2
		COMMUNICATIONS	1.8	4.8	6.0	-	-	-	-	-	-	-	-	-	12.5
		EDUCATION	4.6	10.0	39.9	72.0	84.6	12.8	61.4	43.0	64.3	31.4	125.5	31.7	581.3
		ENERGY GENERATION AND SUPPLY	29.7	56.1	98.6	35.9	56.6	71.1	29.7	97.1	70.8	44.4	111.8	136.5	838.5
		FISHING	-	-	-	-	-	-	-	-	-	-	0.8	1.1	1.9
		FORESTRY	-	-	-	-	-	-	-	-	-	-	-	1.6	1.6
		GOVERNMENT AND CIVIL SOCIETY	7.5	3.9	-	-	-	-	-	-	-	6.4	6.4	5.3	29.4
		HEALTH	-	3.0	0.9	5.5	7.2	29.1	15.1	35.6	5.4	6.5	73.9	45.2	227.4
		INDUSTRY	-	-	-	-	-	-	-	12.1	3.2	84.2	113.9	74.7	288.1
		MINERAL RESOURCES AND MINING	-	-	-	-	0.2	0.0	0.0	-	-	0.4	0.4	-	1.1
		MULTISECTOR/CROSS-CUTTING	209.4	308.3	313.4	351.1	281.2	292.1	292.4	313.4	294.3	233.5	508.2	174.0	3,571.3
		OTHER SOCIAL INFRASTRUCTURE AND SERVICES	-	-	-	-	-	-	-	-	-	27.7	36.9	88.3	152.9
		TOURISM	0.5	0.3	4.1	0.2	1.3	4.4	10.9	7.8	6.3	-	-	-	35.6
		TRADE POLICY AND REGULATIONS	-	-	-	-	-	-	-	-	-	0.5	5.0	3.8	9.3
		TRANSPORT AND STORAGE	61.2	66.5	70.3	134.7	138.8	134.5	124.0	105.3	138.8	109.3	34.8	12.6	1,130.8
		WATER SUPPLY AND SANITATION	30.2	13.7	26.9	23.7	21.8	22.1	35.8	56.5	56.0	93.7	99.3	42.3	522.0
			426.1	870.8	728.6	784.8	772.9	856.1	944.0	822.9	1,146.2	1,125.8	1,436.0	2,305.7	12,219.9
	IFAD	AGRICULTURE	3.0	3.8	1.8	19.0	9.5	58.7	38.8	31.3	34.6	53.1	57.1	40.9	351.6
		BANKING AND FINANCIAL SERVICES	0.7	0.6	1.3	10.5	-	-	-	-	-	-	-	-	13.1

Donor Group	Donor Agency	OECD/DAC Sector	Funding												Totals
			Fiscal Year 2000	Fiscal Year 2001	Fiscal Year 2002	Fiscal Year 2003	Fiscal Year 2004	Fiscal Year 2005	Fiscal Year 2006	Fiscal Year 2007	Fiscal Year 2008	Fiscal Year 2009	Fiscal Year 2010	Fiscal Year 2011	
		MULTISECTOR/CROSS-CUTTING	0.0	-	-	-	-	-	-	-	-	-	-	-	0.0
			3.7	4.4	3.1	29.5	9.5	58.7	38.8	31.3	34.6	53.1	57.1	40.9	364.7
	NDF	ENERGY GENERATION AND SUPPLY	-	-	-	-	-	-	-	-	-	-	-	-	-
		TRANSPORT AND STORAGE	3.9	2.0	2.4	1.6	0.9	-	-	-	-	-	-	-	10.9
			3.9	2.0	2.4	1.6	0.9	-	-	-	-	-	-	-	10.9
	OFID	ENERGY GENERATION AND SUPPLY	-	-	-	1.0	7.0	4.0	2.1	0.7	11.4	29.3	8.5	7.3	71.3
		TRANSPORT AND STORAGE	8.0	10.9	8.6	4.0	2.4	2.1	1.4	1.3	9.2	11.5	11.5	4.2	75.0
			8.0	10.9	8.6	5.0	9.3	6.1	3.5	2.1	20.6	40.8	19.9	11.5	146.2
			624.1	1,182.5	951.3	1,039.7	929.4	1,189.4	1,189.1	1,031.9	1,436.5	1,468.9	1,761.1	2,559.0	15,363.2
UN Group	FAO	AGRICULTURE	3.0	2.8	3.0	2.4	2.6	3.6	1.9	7.5	11.8	3.7	9.2	10.9	62.6
		HEALTH	-	-	-	-	0.5	0.4	0.1	0.0	0.6	0.2	1.7	1.2	4.7
		MULTISECTOR/CROSS-CUTTING	-	-	-	0.5	1.3	1.5	-	0.1	0.7	1.1	2.1	0.0	7.2
			3.0	2.8	3.0	2.9	4.4	5.5	2.0	7.6	13.1	5.1	13.0	12.2	74.5
	GAVI	HEALTH	-	-	-	-	-	-	-	15.8	-	7.5	5.9	11.6	40.8
			-	-	-	-	-	-	-	15.8	-	7.5	5.9	11.6	40.8
	GEF	ENERGY GENERATION AND SUPPLY	-	-	-	-	-	-	-	-	-	-	-	-	-
		MULTISECTOR/CROSS-CUTTING	-	-	-	-	-	-	-	-	-	-	-	-	-
			-	-	-	-	-	-	-	-	-	-	-	-	-
	GF	HEALTH	123.7	105.0	223.0	235.1	66.1	-	-	32.2	113.9	116.2	102.8	51.1	1,169.2
			123.7	105.0	223.0	235.1	66.1	-	-	32.2	113.9	116.2	102.8	51.1	1,169.2
	ILO	MULTISECTOR/CROSS-CUTTING	-	-	-	0.0	-	-	-	-	-	-	-	-	0.0
			-	-	-	0.0	-	-	-	-	-	-	-	-	0.0
	UNICEF	AGRICULTURE	-	-	-	-	-	0.2	0.4	0.5	0.3	0.9	2.5	-	4.8
		COMMUNICATIONS	-	-	-	-	0.1	1.9	0.7	0.5	0.4	-	-	-	3.6
		EDUCATION	7.6	29.1	12.5	18.5	8.6	16.7	10.4	10.0	9.0	9.0	11.9	8.8	152.1
		EMERGENCY ASSISTANCE AND RECONSTRUCTION	-	-	-	-	-	-	-	-	-	1.0	1.5	0.7	3.2
		GOVERNMENT AND CIVIL SOCIETY	-	-	-	-	-	-	-	-	-	3.7	3.6	9.1	16.4
		HEALTH	21.3	24.2	27.0	26.1	25.7	80.7	88.0	88.5	95.4	70.2	74.6	35.3	657.2
		MULTISECTOR/CROSS-CUTTING	26.4	49.3	35.6	36.0	13.5	10.3	11.5	17.7	18.0	11.3	21.1	5.2	255.9
		POPULATION POLICIES/PROGRAMMES AND	-	-	-	-	-	-	-	-	-	1.4	1.8	4.1	7.3

Donor Group	Donor Agency	OECD/DAC Sector	Funding												Totals
			Fiscal Year 2000	Fiscal Year 2001	Fiscal Year 2002	Fiscal Year 2003	Fiscal Year 2004	Fiscal Year 2005	Fiscal Year 2006	Fiscal Year 2007	Fiscal Year 2008	Fiscal Year 2009	Fiscal Year 2010	Fiscal Year 2011	
		REPRODUCTIVE HEALTH													
		WATER SUPPLY AND SANITATION	9.0	15.4	13.1	27.7	15.7	21.2	18.5	21.4	32.5	37.9	28.4	21.8	262.6
			64.3	118.0	88.2	108.4	63.6	131.1	129.5	138.7	155.7	135.3	145.4	85.0	1,363.1
	UNDP	AGRICULTURE	0.0	-	-	4.7	7.6	10.6	12.0	8.9	9.6	4.5	1.7	1.9	61.5
		BUSINESS AND OTHER SERVICES	-	-	-	-	-	-	-	-	-	-	-	-	-
		EDUCATION	-	-	-	-	-	-	-	-	-	-	-	-	-
		EMERGENCY ASSISTANCE AND RECONSTRUCTION	-	-	-	-	-	-	-	-	-	-	-	0.1	0.1
		ENERGY GENERATION AND SUPPLY	-	-	-	-	-	-	-	-	-	2.0	0.6	0.4	3.1
		FORESTRY	-	-	-	-	0.4	0.9	0.8	0.9	0.5	3.1	1.9	-	8.4
		GOVERNMENT AND CIVIL SOCIETY	1.9	3.9	9.7	14.6	14.3	13.4	8.2	11.8	5.8	7.2	6.4	2.3	99.4
		HEALTH	0.4	0.3	0.3	-	-	-	-	-	-	-	-	-	1.0
		INDUSTRY	0.0	-	-	-	0.5	2.3	1.7	0.8	0.5	0.8	0.4	0.7	7.6
		MINERAL RESOURCES AND MINING	-	-	-	-	-	-	-	0.1	0.1	0.0	-	-	0.2
		MULTISECTOR/CROSS-CUTTING	10.4	18.4	13.6	24.7	16.8	9.3	6.9	10.1	11.5	57.5	7.0	10.6	196.6
		OTHER SOCIAL INFRASTRUCTURE AND SERVICES	-	-	-	0.0	0.5	-	-	-	-	-	1.0	0.8	2.3
		TOURISM	-	-	-	-	-	-	-	-	0.0	0.1	0.2	0.2	0.5
		TRADE POLICY AND REGULATIONS	0.0	-	-	-	-	-	-	-	-	0.0	-	0.0	0.0
		UNALLOCATED/ UNSPECIFIED	-	-	-	-	-	-	-	-	-	-	-	-	-
		WATER SUPPLY AND SANITATION	-	-	-	-	-	-	-	-	-	0.3	2.4	1.8	4.5
			12.8	22.6	23.6	44.1	39.9	36.4	29.5	32.5	27.9	75.5	21.6	18.9	385.3
	UNESCO	OTHER SOCIAL INFRASTRUCTURE AND SERVICES	-	-	0.3	0.2	-	-	-	-	-	-	-	-	0.5
			-	-	0.3	0.2	-	-	-	-	-	-	-	-	0.5
	UN Women	MULTISECTOR/CROSS-CUTTING	-	-	-	-	1.9	1.4	0.4	0.3	0.4	0.1	-	0.1	4.5
			-	-	-	-	1.9	1.4	0.4	0.3	0.4	0.1	-	0.1	4.5
	UNIDO	MULTISECTOR/CROSS-CUTTING	-	-	-	0.3	-	-	-	-	-	-	-	-	0.3
			-	-	-	0.3	-	-	-	-	-	-	-	-	0.3
	UNFPA	EMERGENCY ASSISTANCE AND RECONSTRUCTION	-	-	-	-	-	-	-	-	-	-	0.1	0.1	0.2
		GOVERNMENT AND CIVIL SOCIETY	-	-	-	-	0.1	0.1	0.1	0.1	0.2	0.1	0.2	0.2	1.1
		HEALTH	0.7	1.5	2.3	4.7	13.3	8.5	13.6	15.9	10.6	7.5	6.4	5.5	90.6

Donor Group	Donor Agency	OECD/DAC Sector	Funding												Totals
			Fiscal Year 2000	Fiscal Year 2001	Fiscal Year 2002	Fiscal Year 2003	Fiscal Year 2004	Fiscal Year 2005	Fiscal Year 2006	Fiscal Year 2007	Fiscal Year 2008	Fiscal Year 2009	Fiscal Year 2010	Fiscal Year 2011	
		MULTISECTOR/CROSS-CUTTING	0.8	0.6	1.5	3.5	5.0	3.3	1.2	2.2	1.8	2.6	2.4	1.4	26.3
		OTHER SOCIAL INFRASTRUCTURE AND SERVICES	-	-	-	-	-	-	-	-	-	-	0.1	0.1	0.2
			1.5	2.1	3.8	8.3	18.4	12.0	14.9	18.2	12.6	10.2	9.1	7.3	118.4
	WFP	AGRICULTURE	-	-	-	-	47.8	36.9	177.4	115.2	257.4	217.2	90.1	6.0	948.0
		EDUCATION	-	7.1	9.4	14.4	14.5	10.9	8.2	8.3	3.4	6.3	5.6	2.8	90.7
		EMERGENCY ASSISTANCE AND RECONSTRUCTION	-	260.2	301.3	146.1	132.5	9.1	32.8	-	-	-	-	-	882.0
		HEALTH	-	-	-	-	0.0	5.9	6.7	15.6	1.8	2.5	-	-	32.4
		MULTISECTOR/CROSS-CUTTING	-	9.8	12.3	11.4	7.1	1.1	-	-	-	-	0.5	0.1	42.3
			-	277.1	322.9	171.9	201.9	63.8	225.1	139.1	262.5	225.9	96.2	9.0	1,995.5
			205.3	527.5	664.8	571.1	396.2	250.2	401.4	384.4	586.0	575.9	394.1	195.2	5,152.1
	Total		1,947.1	2,465.0	2,422.7	2,708.9	2,547.6	2,960.2	3,290.2	2,952.6	3,280.1	3,043.1	3,496.3	4,002.4	35,116

Annex 8: Distribution of Disbursement by Sectors and by Development Partners EFY 2011(in million USD)

OECD/DAC Sector	Donor Group	Donor Agency	Funding												Totals
			Fiscal Year 2000	Fiscal Year 2001	Fiscal Year 2002	Fiscal Year 2003	Fiscal Year 2004	Fiscal Year 2005	Fiscal Year 2006	Fiscal Year 2007	Fiscal Year 2008	Fiscal Year 2009	Fiscal Year 2010	Fiscal Year 2011	
AGRICULTURE	BILATERAL Group	Austria	4.04	2.59	2.70	2.12	1.98	0.34	6.44	6.14	2.38	2.30	-	0.44	31.47
		CIDA Canada	0.01	4.84	57.60	50.45	47.45	78.02	70.17	33.06	27.92	13.71	21.62	10.71	415.56
		China	-	-	-	-	-	0.75	0.91	0.64	0.82	-	-	-	3.11
		Czech Republic	-	-	-	-	0.04	0.11	0.04	0.30	37.41	64.01	4.75	63.17	169.83
		DFID	54.40	68.92	33.59	77.81	94.21	75.07	25.64	12.35	168.30	84.95	207.17	158.81	1,061.22
		Denmark	-	-	-	-	-	-	-	-	-	-	7.96	-	7.96
		Finland	-	-	-	-	3.00	3.76	6.83	3.01	5.76	3.82	2.94	4.14	33.26
		France	0.67	14.39	0.84	0.07	0.03	-	-	-	-	-	-	-	16.00
		Germany	7.10	4.60	5.63	3.54	35.51	50.01	42.38	13.09	13.15	29.54	20.42	48.80	273.79
		IRISH AID	0.61	32.73	11.69	-	15.72	0.27	17.31	15.05	13.38	13.24	13.69	13.26	146.95
		India	-	36.07	30.04	45.90	84.87	81.06	26.66	24.60	21.95	15.21	-	1.34	367.70
		Iran	-	-	-	-	-	-	-	-	-	-	-	-	-
		Italy	6.94	0.45	0.01	2.11	4.06	-	0.11	7.62	6.66	1.50	-	-	29.46
		JICA	4.20	0.83	2.62	9.18	9.28	12.33	13.62	9.47	3.93	2.35	5.49	4.15	77.46
		KOICA	-	-	-	1.62	0.34	0.31	0.87	1.78	2.73	2.88	0.90	0.86	12.30
		Netherlands	0.95	-	-	-	16.35	27.35	22.69	23.74	15.27	12.60	13.75	24.12	156.81
		Norway	-	-	-	-	-	-	14.48	12.10	-	14.32	-	-	40.90
		SIDA Sweden	36.87	17.46	8.49	(0.00)	0.00	-	-	-	-	-	0.14	-	62.97
		Spain	-	-	-	-	7.02	-	2.72	0.80	-	3.23	1.18	1.14	16.09
		USAID	-	-	-	27.30	27.60	31.42	76.21	166.32	87.37	78.21	73.27	66.78	634.49
			115.80	182.88	153.23	220.12	347.46	360.82	327.07	330.03	407.02	341.88	373.30	397.74	3,557.33
	European Union	European Union	18.59	73.49	59.67	28.17	31.60	2.64	40.04	41.03	1.25	18.59	30.39	48.80	394.26
			18.59	73.49	59.67	28.17	31.60	2.64	40.04	41.03	1.25	18.59	30.39	48.80	394.26
	IFIs	ADB	7.78	39.71	11.71	19.67	28.38	12.84	2.08	2.80	2.87	8.27	10.19	13.04	159.36
		IDA	79.06	403.90	162.81	161.77	181.09	290.02	374.71	152.06	507.08	487.31	268.75	457.85	3,526.42
		IFAD	2.95	3.81	1.78	19.01	9.51	58.71	38.85	31.33	34.58	53.09	57.11	40.86	351.59
			89.79	447.42	176.30	200.45	218.99	361.57	415.65	186.19	544.53	548.67	336.06	511.76	4,037.38
	UN Group	FAO	3.05	2.78	2.99	2.43	2.62	3.60	1.91	7.53	11.77	3.74	9.23	10.94	62.59

OECD/DAC Sector	Donor Group	Donor Agency	Funding												Totals
			Fiscal Year 2000	Fiscal Year 2001	Fiscal Year 2002	Fiscal Year 2003	Fiscal Year 2004	Fiscal Year 2005	Fiscal Year 2006	Fiscal Year 2007	Fiscal Year 2008	Fiscal Year 2009	Fiscal Year 2010	Fiscal Year 2011	
		UNICEF	-	-	-	-	-	0.17	0.42	0.54	0.35	0.86	2.51	-	4.83
		UNDP	0.03	-	-	4.72	7.58	10.56	12.02	8.88	9.63	4.47	1.66	1.94	61.48
		WFP	-	-	-	-	47.80	36.91	177.38	115.24	257.38	217.21	90.10	6.02	948.04
			3.08	2.78	2.99	7.14	57.99	51.24	191.73	132.19	279.12	226.28	103.50	18.90	1,076.94
			227.25	706.57	392.19	455.88	656.04	776.27	974.49	689.44	1,231.92	1,135.42	843.24	977.19	9,065.91
BANKING AND FINANCIAL SERVICES	BILATERAL Group	DFID	-	-	-	-	-	-	-	-	-	-	-	0.24	0.24
		Germany	0.26	0.12	0.32	0.21	2.07	1.24	0.09	0.02	0.03	0.03	0.02	-	4.42
			0.26	0.12	0.32	0.21	2.07	1.24	0.09	0.02	0.03	0.03	0.02	0.24	4.65
	European Union	European Union	-	-	-	-	-	-	-	-	-	-	-	-	-
			-	-	-	-	-	-	-	-	-	-	-	-	-
	IFIs	ADB	7.91	22.07	9.98	0.99	0.15	-	-	-	-	-	-	-	41.10
		BADEA	-	-	-	-	-	-	-	-	-	-	-	-	-
		EIB	5.46	4.84	10.61	-	-	-	-	-	-	-	11.66	11.38	43.95
		IDA	2.05	0.24	5.73	-	-	-	-	-	-	0.50	50.45	37.83	96.80
		IFAD	0.69	0.62	1.34	10.45	-	-	-	-	-	-	-	-	13.10
			16.11	27.77	27.66	11.44	0.15	-	-	-	-	0.50	62.11	49.21	194.94
			16.37	27.89	27.98	11.65	2.22	1.24	0.09	0.02	0.03	0.53	62.12	49.44	199.59
BUSINESS AND OTHER SERVICES	BILATERAL Group	CIDA Canada	-	-	-	-	-	-	-	-	-	1.36	1.31	1.35	4.03
		DFID	0.16	-	-	-	-	0.37	6.47	7.10	8.28	10.51	12.35	13.38	58.62
		Germany	-	-	-	-	-	3.29	2.96	4.14	1.14	0.00	-	-	11.54
		JICA	-	-	-	-	-	-	-	-	-	-	-	70.98	70.98
			0.16	-	-	-	-	3.66	9.43	11.24	9.42	11.88	13.66	85.71	145.17
	IFIs	ADB	-	1.73	-	-	-	-	-	-	-	6.81	-	-	8.54
			-	1.73	-	-	-	-	-	-	-	6.81	-	-	8.54
	UN Group	UNDP	-	-	-	-	-	-	-	-	-	-	-	-	-
			-	-	-	-	-	-	-	-	-	-	-	-	-
			0.16	1.73	-	-	-	3.66	9.43	11.24	9.42	18.69	13.66	85.71	153.71
COMMODITY AID AND GENERAL PROGRAMME ASSISTANCE	IFIs	IDA	-	-	-	-	-	-	-	-	-	-	-	1,193.17	1,193.17
			-	-	-	-	-	-	-	-	-	-	-	1,193.17	1,193.17
			-	-	-	-	-	-	-	-	-	-	-	1,193.17	1,193.17

OECD/DAC Sector	Donor Group	Donor Agency	Funding												Totals
			Fiscal Year 2000	Fiscal Year 2001	Fiscal Year 2002	Fiscal Year 2003	Fiscal Year 2004	Fiscal Year 2005	Fiscal Year 2006	Fiscal Year 2007	Fiscal Year 2008	Fiscal Year 2009	Fiscal Year 2010	Fiscal Year 2011	
COMMUNICATIONS	BILATERAL Group	DFID	-	0.01	0.06	-	-	-	-	-	-	-	-	-	0.08
		Netherlands	-	-	-	-	-	-	-	-	-	-	-	-	-
			-	0.01	0.06	-	-	-	-	-	-	-	-	-	0.08
	IFIs	IDA	1.76	4.78	5.96	-	-	-	-	-	-	-	-	-	12.50
			1.76	4.78	5.96	-	-	-	-	-	-	-	-	-	12.50
	UN Group	UNICEF	-	-	-	-	0.08	1.89	0.72	0.51	0.35	-	-	-	3.55
			-	-	-	-	0.08	1.89	0.72	0.51	0.35	-	-	-	3.55
			1.76	4.79	6.02	-	0.08	1.89	0.72	0.51	0.35	-	-	-	16.13
CONSTRUCTION	BILATERAL Group	Germany	-	-	-	-	-	-	-	-	-	-	-	-	-
			-	-	-	-	-	-	-	-	-	-	-	-	-
			-	-	-	-	-	-	-	-	-	-	-	-	-
EDUCATION	BILATERAL Group	CIDA Canada	-	-	-	-	-	-	0.64	2.13	0.52	1.48	1.40	4.13	10.29
		China	-	-	-	-	-	-	2.22	2.88	-	-	-	-	5.10
		Czech Republic	-	-	-	-	-	0.00	0.08	1.06	0.04	0.35	0.28	0.59	2.41
		DFID	-	3.41	0.50	9.62	81.37	40.88	61.32	83.33	55.69	18.48	4.53	22.40	381.53
		Finland	0.05	0.59	10.76	-	11.61	6.93	5.92	5.72	5.99	7.84	4.16	5.55	65.12
		France	0.74	0.50	0.98	0.47	0.17	0.15	-	-	-	-	-	-	3.01
		Germany	1.33	0.75	4.50	1.93	1.75	5.77	6.69	7.78	7.78	12.37	12.09	6.95	69.68
		IRISH AID	4.06	-	0.24	0.14	0.13	-	-	-	-	-	-	-	4.57
		Italy	3.70	12.60	0.54	12.83	0.10	6.19	0.02	3.07	2.52	1.14	2.94	-	45.66
		JICA	2.16	6.84	7.54	9.59	9.35	17.72	2.62	2.32	2.08	0.63	2.09	1.20	64.13
		KOICA	0.04	1.84	2.56	1.51	4.20	9.50	6.37	6.69	12.82	7.48	5.51	2.33	60.84
		Netherlands	-	-	-	-	-	-	-	-	-	-	-	-	-
		Norway	2.09	-	3.68	0.79	1.85	0.52	2.92	0.77	3.35	4.76	-	1.78	22.52
		SIDA Sweden	14.32	11.85	5.44	8.23	3.68	2.30	-	1.20	-	-	1.37	-	48.39
		USAID	-	-	-	21.10	21.34	18.29	29.26	29.83	28.13	38.29	24.17	27.28	237.69
			28.49	38.38	36.75	66.21	135.55	108.26	118.04	146.80	118.91	92.82	58.54	72.21	1,020.94
	European Union	European Union	0.14	3.14	0.51	0.01	-	-	-	-	-	-	-	-	3.80
			0.14	3.14	0.51	0.01	-	-	-	-	-	-	-	-	3.80
	IFIs	ADB	21.81	0.16	-	-	-	-	-	-	-	-	-	-	21.97

OECD/DAC Sector	Donor Group	Donor Agency	Funding												Totals
			Fiscal Year 2000	Fiscal Year 2001	Fiscal Year 2002	Fiscal Year 2003	Fiscal Year 2004	Fiscal Year 2005	Fiscal Year 2006	Fiscal Year 2007	Fiscal Year 2008	Fiscal Year 2009	Fiscal Year 2010	Fiscal Year 2011	
		IDA	4.63	10.04	39.94	71.98	84.64	12.82	61.40	42.98	64.27	31.36	125.51	31.71	581.27
			26.44	10.20	39.94	71.98	84.64	12.82	61.40	42.98	64.27	31.36	125.51	31.71	603.24
	UN Group	UNICEF	7.56	29.08	12.46	18.53	8.60	16.73	10.41	10.05	9.04	8.99	11.86	8.79	152.09
		UNDP	-	-	-	-	-	-	-	-	-	-	-	-	-
		WFP	-	7.13	9.36	14.42	14.47	10.86	8.19	8.26	3.35	6.27	5.60	2.84	90.74
			7.56	36.21	21.81	32.95	23.07	27.59	18.59	18.30	12.39	15.26	17.46	11.63	242.83
			62.62	87.93	99.01	171.15	243.26	148.67	198.03	208.08	195.58	139.43	201.51	115.54	1,870.81
EMERGENCY ASSISTANCE AND RECONSTRUCTION	BILATERAL Group	CIDA Canada	-	-	-	-	-	-	-	-	-	-	-	0.36	0.36
		China	-	-	-	-	-	-	-	-	-	-	-	7.22	7.22
		JICA	-	-	-	-	-	-	-	-	-	-	-	0.99	0.99
		SIDA Sweden	-	-	-	-	-	-	-	-	-	-	-	0.02	0.02
		Spain	-	-	-	1.49	-	-	-	-	-	-	-	-	1.49
			-	-	-	1.49	-	-	-	-	-	-	-	8.59	10.07
	European Union	European Union	-	12.37	2.52	0.56	0.15	0.03	3.57	12.25	6.03	13.11	5.05	6.04	61.68
			-	12.37	2.52	0.56	0.15	0.03	3.57	12.25	6.03	13.11	5.05	6.04	61.68
	UN Group	UNICEF	-	-	-	-	-	-	-	-	-	0.96	1.55	0.68	3.19
		UNDP	-	-	-	-	-	-	-	-	-	-	-	0.15	0.15
		UNFPA	-	-	-	-	-	-	-	-	-	-	0.08	0.08	0.16
		WFP	-	260.16	301.32	146.11	132.54	9.05	32.82	-	-	-	-	-	882.01
			-	260.16	301.32	146.11	132.54	9.05	32.82	-	-	0.96	1.63	0.90	885.51
			-	272.54	303.85	148.16	132.69	9.08	36.39	12.25	6.03	14.06	6.69	15.53	957.26
ENERGY GENERATION AND SUPPLY	BILATERAL Group	Austria	-	-	-	0.04	-	-	-	-	-	-	-	-	0.04
		China	-	-	-	17.55	119.76	96.45	113.03	117.10	90.05	33.31	212.77	-	800.02
		France	-	-	24.48	-	-	23.70	11.54	5.78	13.16	-	25.21	20.32	124.19
		Germany	-	-	-	-	-	-	-	-	-	-	-	5.83	5.83
		India	31.84	17.40	1.22	1.13	0.31	-	-	-	-	-	-	-	51.90
		Italy	122.76	66.84	7.01	0.85	-	-	-	-	-	-	-	-	197.47
		JICA	-	-	-	-	-	-	0.71	1.29	0.15	-	-	-	2.15
		KOICA	-	-	-	2.83	0.61	-	-	-	-	-	-	-	3.44
		Kuwait	6.10	6.44	2.13	8.11	1.53	-	-	-	-	-	-	-	24.32
		Netherlands	-	-	-	-	-	-	-	-	-	-	-	-	-

OECD/DAC Sector	Donor Group	Donor Agency	Funding												Totals
			Fiscal Year 2000	Fiscal Year 2001	Fiscal Year 2002	Fiscal Year 2003	Fiscal Year 2004	Fiscal Year 2005	Fiscal Year 2006	Fiscal Year 2007	Fiscal Year 2008	Fiscal Year 2009	Fiscal Year 2010	Fiscal Year 2011	
		Norway	-	-	5.16	3.44	0.54	3.59	0.07	-	-	-	-	-	12.79
		Saudi Arabia	-	-	-	-	-	-	-	-	7.03	2.38	-	-	9.41
			160.70	90.69	40.01	33.95	122.76	123.73	125.35	124.17	110.39	35.69	237.98	26.15	1,231.55
	European Union	European Union	-	-	-	-	-	-	-	-	-	4.80	-	7.78	12.58
			-	-	-	-	-	-	-	-	-	4.80	-	7.78	12.58
	IFIs	ADB	10.05	32.29	71.91	22.10	52.81	78.63	58.00	22.57	48.10	57.70	45.76	18.24	518.16
		BADEA	1.90	-	1.55	1.21	1.85	0.46	4.14	1.08	2.47	9.49	6.00	3.06	33.21
		EIB	27.09	24.41	1.34	-	-	-	-	-	-	-	-	-	52.84
		IDA	29.74	56.11	98.57	35.93	56.62	71.15	29.68	97.11	70.84	44.43	111.84	136.52	838.53
		NDF	-	-	-	-	-	-	-	-	-	-	-	-	-
		OFID	-	-	-	0.98	6.96	4.01	2.08	0.75	11.41	29.28	8.49	7.30	71.25
			68.78	112.81	173.37	60.22	118.23	154.25	93.89	121.51	132.82	140.89	172.09	165.12	1,513.99
	UN Group	GEF	-	-	-	-	-	-	-	-	-	-	-	-	-
		UNDP	-	-	-	-	-	-	-	-	-	1.98	0.64	0.44	3.07
			-	-	-	-	-	-	-	-	-	1.98	0.64	0.44	3.07
			229.48	203.50	213.38	94.17	240.99	277.98	219.24	245.68	243.21	183.36	410.71	199.49	2,761.19
FISHING	IFIs	IDA	-	-	-	-	-	-	-	-	-	-	0.83	1.05	1.89
			-	-	-	-	-	-	-	-	-	-	0.83	1.05	1.89
			-	-	-	-	-	-	-	-	-	-	0.83	1.05	1.89
FORESTRY	BILATERAL Group	Austria	-	-	-	-	-	-	-	-	-	-	-	-	-
		Germany	-	-	-	-	-	-	1.83	0.42	0.41	0.73	0.21	0.17	3.77
		KOICA	-	-	-	-	-	-	-	0.05	-	-	-	-	0.05
		Norway	-	-	-	-	-	-	8.48	4.62	-	-	-	0.59	13.68
		SIDA Sweden	-	-	-	-	-	-	-	-	-	-	-	1.48	1.48
			-	-	-	-	-	-	10.30	5.09	0.41	0.73	0.21	2.24	18.99
	European Union	European Union	-	-	0.19	0.56	1.96	0.19	0.21	0.08	0.01	-	-	-	3.20
			-	-	0.19	0.56	1.96	0.19	0.21	0.08	0.01	-	-	-	3.20
	IFIs	IDA	-	-	-	-	-	-	-	-	-	-	-	1.55	1.55
			-	-	-	-	-	-	-	-	-	-	-	1.55	1.55
	UN Group	UNDP	-	-	-	-	0.37	0.87	0.79	0.85	0.48	3.13	1.91	-	8.41
			-	-	-	-	0.37	0.87	0.79	0.85	0.48	3.13	1.91	-	8.41

OECD/DAC Sector	Donor Group	Donor Agency	Fiscal Year 2000	Fiscal Year 2001	Fiscal Year 2002	Fiscal Year 2003	Fiscal Year 2004	Fiscal Year 2005	Fiscal Year 2006	Fiscal Year 2007	Fiscal Year 2008	Fiscal Year 2009	Fiscal Year 2010	Fiscal Year 2011	Totals
			-	-	0.19	0.56	2.33	1.06	11.30	6.02	0.90	3.87	2.12	3.80	32.14
GOVERNMENT AND CIVIL SOCIETY	BILATERAL Group	Austria	-	-	0.33	0.63	-	-	-	-	0.54	0.53	-	1.66	3.69
		CIDA Canada	-	-	-	6.41	2.77	1.54	-	-	-	-	-	2.23	12.96
		DFID	5.36	2.71	1.02	6.33	6.72	5.63	7.61	2.12	0.76	0.37	0.00	0.07	38.69
		Denmark	-	-	-	-	-	-	-	-	-	-	-	0.00	0.00
		Finland	-	-	-	-	-	-	-	-	-	-	-	0.01	0.01
		France	0.79	0.62	0.10	0.03	0.34	0.06	0.57	0.06	-	-	-	0.05	2.62
		Germany	2.41	1.63	0.98	1.07	1.82	1.92	1.57	1.28	0.08	0.00	-	-	12.75
		IRISH AID	0.20	0.33	-	-	-	-	-	0.26	0.22	-	-	0.06	1.07
		Italy	0.31	1.10	0.04	1.14	0.56	0.02	-	-	-	0.05	-	0.17	3.39
		JICA	-	-	-	0.77	-	2.45	0.75	-	-	-	-	0.36	4.33
		Netherlands	-	-	-	-	-	0.33	0.29	0.78	0.22	-	-	0.00	1.62
		New-Zealand	-	-	-	-	-	-	-	-	-	-	-	0.01	0.01
		Norway	0.12	-	-	-	-	0.27	0.16	-	-	-	-	1.89	2.44
		SIDA Sweden	-	-	-	-	-	-	-	-	-	-	1.25	2.67	3.92
		Spain	-	0.59	0.57	0.58	-	-	-	-	-	-	-	-	1.74
		Swetherland	-	-	-	-	-	-	-	-	-	-	-	0.04	0.04
		USAID	3.71	0.49	0.69	-	-	0.40	2.73	3.27	10.75	5.36	6.90	11.64	45.93
			12.90	7.46	3.74	16.96	12.21	12.60	13.68	7.77	12.56	6.31	8.15	20.87	135.20
	European Union	European Union	6.58	2.42	4.62	1.83	2.93	2.41	3.22	1.66	2.43	1.52	0.56	0.69	30.87
			6.58	2.42	4.62	1.83	2.93	2.41	3.22	1.66	2.43	1.52	0.56	0.69	30.87
	IFIs	ADB	-	-	-	-	-	-	-	-	-	-	-	0.00	0.00
		IDA	7.48	3.86	-	-	-	-	-	-	-	6.35	6.39	5.29	29.37
			7.48	3.86	-	-	-	-	-	-	-	6.35	6.39	5.29	29.37
	UN Group	UNICEF	-	-	-	-	-	-	-	-	-	3.74	3.57	9.12	16.44
		UNDP	1.92	3.91	9.68	14.61	14.27	13.37	8.19	11.77	5.75	7.24	6.35	2.31	99.36
		UNFPA	-	-	-	-	0.07	0.15	0.07	0.14	0.17	0.11	0.15	0.19	1.06
			1.92	3.91	9.68	14.61	14.35	13.52	8.26	11.91	5.92	11.08	10.08	11.62	116.86
			28.89	17.64	18.04	33.40	29.48	28.53	25.16	21.34	20.91	25.27	25.17	38.46	312.29
HEALTH	BILATERAL Group	Austria	4.98	0.47	2.28	0.45	0.83	-	-	-	-	-	-	-	9.01
		CIDA	-	-	-	-	-	-	-	-	-	9.04	8.61	7.72	25.36

OECD/DAC Sector	Donor Group	Donor Agency	Funding												Totals
			Fiscal Year 2000	Fiscal Year 2001	Fiscal Year 2002	Fiscal Year 2003	Fiscal Year 2004	Fiscal Year 2005	Fiscal Year 2006	Fiscal Year 2007	Fiscal Year 2008	Fiscal Year 2009	Fiscal Year 2010	Fiscal Year 2011	
		Canada													
		Czech Republic	-	-	-	-	-	0.01	0.38	0.12	-	0.27	0.06	0.17	1.01
		DFID	-	8.23	29.36	52.60	0.88	160.10	283.11	112.54	57.27	62.71	116.42	96.18	979.41
		Germany	-	-	-	-	-	-	-	-	-	-	-	-	-
		IRISH AID	1.01	-	3.54	3.17	3.34	2.33	6.31	14.10	0.43	5.54	5.92	6.11	51.80
		Italy	2.23	4.06	0.67	0.31	6.59	2.48	0.25	4.30	6.46	1.56	3.55	-	32.45
		JICA	0.00	-	-	2.37	-	1.86	0.62	2.31	0.01	-	-	-	7.16
		KOICA	-	1.85	3.05	0.29	0.63	1.26	0.91	0.43	8.25	3.95	3.99	0.17	24.77
		Netherlands	-	-	-	-	-	5.71	7.14	14.86	15.87	10.81	11.69	11.00	77.09
		SIDA Sweden	1.65	-	-	-	-	-	-	-	-	-	-	0.37	2.01
		Spain	0.30	7.39	7.37	6.33	6.97	11.25	2.03	1.07	-	1.04	-	-	43.76
		USAID	-	-	-	80.49	111.51	121.37	129.53	169.08	102.28	125.46	116.46	132.80	1,088.98
			10.17	22.01	46.27	146.00	130.75	306.38	430.28	318.82	190.57	220.38	266.70	254.50	2,342.83
	European Union	European Union	-	-	-	-	-	-	17.77	-	28.25	10.13	82.84	33.63	172.61
			-	-	-	-	-	-	17.77	-	28.25	10.13	82.84	33.63	172.61
	IFIs	ADB	2.66	-	-	-	-	-	-	-	-	-	-	-	2.66
		IDA	-	3.00	0.89	5.46	7.16	29.08	15.15	35.57	5.40	6.55	73.94	45.16	227.35
			2.66	3.00	0.89	5.46	7.16	29.08	15.15	35.57	5.40	6.55	73.94	45.16	230.01
	UN Group	FAO	-	-	-	-	0.47	0.39	0.09	0.04	0.64	0.24	1.66	1.18	4.71
		GAVI	-	-	-	-	-	-	-	15.82	-	7.47	5.86	11.60	40.75
		GF	123.70	104.99	223.01	235.12	66.09	-	-	32.21	113.90	116.22	102.84	51.12	1,169.20
		UNICEF	21.34	24.22	27.04	26.10	25.69	80.72	87.97	88.53	95.43	70.24	74.64	35.30	657.21
		UNDP	0.38	0.31	0.30	-	-	-	-	-	-	-	-	-	1.00
		UNFPA	0.71	1.49	2.31	4.73	13.29	8.52	13.63	15.88	10.57	7.50	6.44	5.53	90.59
		WFP	-	-	-	-	0.00	5.93	6.70	15.57	1.75	2.46	-	-	32.41
		WHO	-	-	-	-	-	-	-	-	-	-	-	-	-
			146.14	131.01	252.66	265.95	105.54	95.55	108.38	168.05	222.29	204.13	191.43	104.73	1,995.87
			158.96	156.02	299.82	417.41	243.45	431.01	571.57	522.43	446.51	441.18	614.91	438.03	4,741.32
INDUSTRY	BILATERAL Group	China	-	-	-	-	-	-	-	-	-	-	-	-	-
		DFID	-	-	-	-	0.82	2.44	-	-	-	7.32	16.70	32.63	59.91
		Germany	9.55	22.05	5.01	4.70	5.23	0.27	(0.02)	0.04	-	0.30	0.54	2.59	50.27

OECD/DAC Sector	Donor Group	Donor Agency	Funding												Totals
			Fiscal Year 2000	Fiscal Year 2001	Fiscal Year 2002	Fiscal Year 2003	Fiscal Year 2004	Fiscal Year 2005	Fiscal Year 2006	Fiscal Year 2007	Fiscal Year 2008	Fiscal Year 2009	Fiscal Year 2010	Fiscal Year 2011	
		India	-	-	42.89	37.82	43.14	19.81	3.79	6.23	2.42	4.89	-	-	160.99
		Italy	-	-	2.05	1.70	-	0.00	0.82	0.19	-	-	-	-	4.76
		JICA	-	-	-	1.51	-	1.91	1.24	1.58	0.11	1.46	4.46	2.88	15.16
			9.55	22.05	49.96	45.74	49.19	24.44	5.83	8.04	2.53	13.96	21.69	38.11	291.09
	European Union	European Union	0.03	-	-	-	-	-	-	-	-	-	-	-	0.03
			0.03	-	-	-	-	-	-	-	-	-	-	-	0.03
	IFIS	IDA	-	-	-	-	-	-	-	12.15	3.20	84.18	113.87	74.66	288.05
			-	-	-	-	-	-	-	12.15	3.20	84.18	113.87	74.66	288.05
	UN Group	UNDP	0.01	-	-	-	0.46	2.33	1.70	0.80	0.45	0.75	0.42	0.70	7.62
			0.01	-	-	-	0.46	2.33	1.70	0.80	0.45	0.75	0.42	0.70	7.62
			9.58	22.05	49.96	45.74	49.65	26.77	7.53	20.99	6.18	98.89	135.98	113.47	586.79
MINERAL RESOURCES AND MINING	BILATERAL Group	Czech Republic	0.12	-	-	-	-	0.02	-	0.00	-	-	-	-	0.14
			0.12	-	-	-	-	0.02	-	0.00	-	-	-	-	0.14
	IFIs	IDA	-	-	-	-	0.20	0.05	0.01	-	-	0.41	0.40	-	1.07
			-	-	-	-	0.20	0.05	0.01	-	-	0.41	0.40	-	1.07
	UN Group	UNDP	-	-	-	-	-	-	-	0.11	0.13	0.01	-	-	0.24
			-	-	-	-	-	-	-	0.11	0.13	0.01	-	-	0.24
			0.12	-	-	-	0.20	0.07	0.01	0.11	0.13	0.42	0.40	-	1.45
MULTISECTOR/CROSS-CUTTING	BILATERAL Group	Austria	-	4.24	-	1.74	2.42	3.91	3.29	4.41	2.04	-	0.00	-	22.04
		CIDA Canada	1.56	0.60	0.75	1.30	3.70	7.99	6.01	3.68	4.24	2.83	5.16	5.75	43.57
		China	-	-	-	7.17	-	2.00	-	-	-	-	-	-	9.17
		DFID	145.50	123.08	104.50	130.78	148.23	226.49	269.06	173.61	70.17	9.57	4.18	0.52	1,405.70
		Denmark	-	-	-	-	-	-	-	-	-	-	8.35	0.00	8.36
		France	0.41	0.63	0.54	0.89	0.99	2.42	1.62	7.53	4.18	1.28	1.36	0.04	21.88
		Germany	5.59	2.82	35.23	17.03	6.38	22.12	3.86	3.75	4.35	8.78	19.00	0.94	129.85
		IRISH AID	19.98	21.17	15.73	12.87	14.26	0.06	2.74	1.83	1.28	0.05	0.80	1.19	91.95
		Italy	0.20	-	11.75	2.52	0.22	1.91	0.03	0.02	4.93	0.10	16.76	5.59	44.03
		JICA	2.57	8.14	0.84	1.57	3.19	1.83	15.76	6.55	9.72	4.38	5.07	108.35	167.96
		KOICA	-	-	-	-	0.00	2.38	1.47	2.48	0.77	-	0.71	-	7.82
		Netherlands	1.23	-	-	17.21	17.55	9.11	14.27	6.71	12.30	8.30	24.45	0.60	111.73
		Norway	0.57	0.60	-	0.80	0.73	-	-	4.02	-	2.54	-	20.82	30.10

OECD/DAC Sector	Donor Group	Donor Agency	Funding												Totals
			Fiscal Year 2000	Fiscal Year 2001	Fiscal Year 2002	Fiscal Year 2003	Fiscal Year 2004	Fiscal Year 2005	Fiscal Year 2006	Fiscal Year 2007	Fiscal Year 2008	Fiscal Year 2009	Fiscal Year 2010	Fiscal Year 2011	
		SIDA Sweden	0.21	-	-	0.27	0.61	-	-	-	-	-	1.39	0.25	2.73
		Spain	-	37.08	2.96	12.21	1.88	-	-	-	-	-	-	-	54.12
		Switzerland	-	-	-	-	-	-	-	-	-	5.77	-	-	5.77
			177.82	198.37	172.29	206.36	200.15	280.21	318.11	214.60	113.98	43.59	87.24	144.05	2,156.77
	European Union	European Union	83.91	12.59	46.31	31.72	52.98	2.80	51.47	25.48	24.96	8.46	7.07	6.00	353.76
			83.91	12.59	46.31	31.72	52.98	2.80	51.47	25.48	24.96	8.46	7.07	6.00	353.76
	IFIs	ADB	57.28	121.83	44.37	114.48	-	86.15	83.23	80.74	82.18	81.60	83.28	84.35	919.49
		BADEA	-	-	-	0.11	0.12	-	-	-	-	-	-	-	0.23
		IDA	209.42	308.33	313.36	351.09	281.22	292.13	292.39	313.43	294.27	233.52	508.15	173.99	3,571.29
		IFAD	0.01	-	-	-	-	-	-	-	-	-	-	-	0.01
			266.71	430.16	357.73	465.68	281.34	378.28	375.61	394.17	376.45	315.12	591.43	258.34	4,491.02
	UN Group	FAO	-	-	-	0.47	1.31	1.47	-	0.06	0.66	1.08	2.13	0.03	7.20
		GEF	-	-	-	-	-	-	-	-	-	-	-	-	-
		ILO	-	-	-	0.03	-	-	-	-	-	-	-	-	0.03
		UNICEF	26.41	49.25	35.62	36.00	13.46	10.34	11.50	17.70	18.05	11.29	21.12	5.19	255.92
		UNDP	10.43	18.40	13.58	24.68	16.75	9.26	6.85	10.06	11.47	57.50	7.02	10.60	196.60
		UN Women	-	-	-	-	1.86	1.44	0.41	0.25	0.37	0.06	-	0.13	4.53
		UNIDO	-	-	-	0.30	-	-	-	-	-	-	-	-	0.30
		UNFPA	0.77	0.56	1.50	3.54	5.02	3.35	1.21	2.19	1.82	2.59	2.39	1.39	26.33
		WFP	-	9.84	12.27	11.35	7.12	1.06	-	-	-	-	0.54	0.13	42.31
			37.60	78.06	62.96	76.38	45.51	26.92	19.97	30.26	32.37	72.52	33.20	17.47	533.22
			566.04	719.18	639.28	780.14	579.99	688.21	765.16	664.51	547.76	439.70	718.94	425.85	7,534.77
OTHER SOCIAL INFRASTRUCTURE AND SERVICES	BILATERAL Group	JICA	-	-	-	-	-	-	-	-	-	-	-	0.67	0.67
		KOICA	-	-	-	-	-	-	-	0.16	-	-	-	-	0.16
		Norway	-	-	-	-	-	-	-	-	-	-	-	0.25	0.25
		SIDA Sweden	-	-	-	-	-	-	-	-	-	-	-	0.04	0.04
			-	-	-	-	-	-	-	0.16	-	-	-	0.96	1.12
	European Union	European Union	-	-	-	-	-	-	-	3.73	2.63	8.40	2.25	1.22	18.24
			-	-	-	-	-	-	-	3.73	2.63	8.40	2.25	1.22	18.24
	IFIs	ADB	-	-	-	-	-	-	-	-	0.20	0.09	0.56	0.01	0.86

OECD/DAC Sector	Donor Group	Donor Agency	Funding												Totals
			Fiscal Year 2000	Fiscal Year 2001	Fiscal Year 2002	Fiscal Year 2003	Fiscal Year 2004	Fiscal Year 2005	Fiscal Year 2006	Fiscal Year 2007	Fiscal Year 2008	Fiscal Year 2009	Fiscal Year 2010	Fiscal Year 2011	
		IDA	-	-	-	-	-	-	-	-	-	27.66	36.90	88.31	152.87
			-	-	-	-	-	-	-	-	0.20	27.75	37.46	88.32	153.72
	UN Group	UNDP	-	-	-	0.04	0.50	-	-	-	-	-	1.02	0.76	2.33
		UNESCO	-	-	0.26	0.19	-	-	-	-	-	-	-	-	0.46
		UNFPA	-	-	-	-	-	-	-	-	-	-	0.07	0.15	0.21
			-	-	0.26	0.24	0.50	-	-	-	-	-	1.09	0.90	2.99
			-	-	0.26	0.24	0.50	-	-	3.90	2.83	36.15	40.80	91.41	176.08
POPULATION POLICIES/PROGRAMMES AND REPRODUCTIVE HEALTH	BILATERAL Group	CIDA Canada	-	-	-	-	-	-	-	-	-	-	-	-	-
		IRISH AID	-	-	-	-	-	-	-	-	0.32	-	-	-	0.32
		KOICA	-	-	-	-	0.21	0.17	2.22	1.20	3.50	2.48	0.14	0.34	10.26
			-	-	-	-	0.21	0.17	2.22	1.20	3.82	2.48	0.14	0.34	10.58
	UN Group	UNICEF	-	-	-	-	-	-	-	-	-	1.36	1.79	4.13	7.27
			-	-	-	-	-	-	-	-	-	1.36	1.79	4.13	7.27
			-	-	-	-	0.21	0.17	2.22	1.20	3.82	3.84	1.93	4.47	17.85
TOURISM	BILATERAL Group	Italy	0.44	-	-	-	-	-	-	-	-	-	-	-	0.44
		JICA	-	-	-	-	-	-	0.74	0.93	0.91	-	-	-	2.59
		Norway	-	-	-	-	0.02	-	-	-	-	-	-	-	0.02
		Spain	-	-	-	1.98	-	-	-	-	-	-	-	-	1.98
			0.44	-	-	1.98	0.02	-	0.74	0.93	0.91	-	-	-	5.03
	European Union	European Union	4.64	-	-	-	-	-	-	-	-	-	-	-	4.64
			4.64	-	-	-	-	-	-	-	-	-	-	-	4.64
	IFIs	IDA	0.50	0.32	4.08	0.15	1.30	4.36	10.86	7.77	6.26	-	-	-	35.60
			0.50	0.32	4.08	0.15	1.30	4.36	10.86	7.77	6.26	-	-	-	35.60
	UN Group	UNDP	-	-	-	-	-	-	-	-	0.02	0.15	0.16	0.19	0.51
			-	-	-	-	-	-	-	-	0.02	0.15	0.16	0.19	0.51
			5.59	0.32	4.08	2.13	1.32	4.36	11.61	8.70	7.19	0.15	0.16	0.19	45.78
TRADE POLICY AND REGULATIONS	BILATERAL Group	CIDA Canada	-	-	-	-	-	2.45	3.76	1.19	0.74	0.68	-	-	8.82
		Denmark	-	-	-	-	-	-	-	-	-	-	-	0.07	0.07
		France	-	-	-	-	-	-	-	-	-	-	-	-	-
			-	-	-	-	-	2.45	3.76	1.19	0.74	0.68	-	0.07	8.89
	European Union	European	-	0.67	0.33	1.74	8.04	0.25	0.03	0.23	0.08	3.47	0.17	2.46	17.46

OECD/DAC Sector	Donor Group	Donor Agency	Funding												Totals
			Fiscal Year 2000	Fiscal Year 2001	Fiscal Year 2002	Fiscal Year 2003	Fiscal Year 2004	Fiscal Year 2005	Fiscal Year 2006	Fiscal Year 2007	Fiscal Year 2008	Fiscal Year 2009	Fiscal Year 2010	Fiscal Year 2011	
		Union													
			-	0.67	0.33	1.74	8.04	0.25	0.03	0.23	0.08	3.47	0.17	2.46	17.46
	IFIs	IDA	-	-	-	-	-	-	-	-	-	0.50	4.99	3.78	9.28
			-	-	-	-	-	-	-	-	-	0.50	4.99	3.78	9.28
	UN Group	UNDP	0.01	-	-	-	-	-	-	-	-	0.00	-	0.04	0.04
			0.01	-	-	-	-	-	-	-	-	0.00	-	0.04	0.04
			0.01	0.67	0.33	1.74	8.04	2.70	3.79	1.42	0.83	4.65	5.16	6.35	35.67
TRANSPORT AND STORAGE	BILATERAL Group	China	-	-	1.25	86.96	74.30	119.97	25.69	81.16	132.20	69.41	44.63	-	635.57
		DFID	3.03	2.38	2.46	0.08	0.34	-	-	-	-	-	-	-	8.30
		France	-	-	-	-	6.04	2.41	32.44	0.13	0.07	-	0.02	0.03	41.14
		Germany	21.34	4.18	1.39	1.57	0.96	0.05	0.52	0.08	-	-	-	-	30.09
		IRISH AID	-	-	-	-	-	-	-	-	-	-	-	-	-
		India	-	-	-	-	-	-	0.37	-	-	-	-	-	0.37
		JICA	13.23	0.94	-	11.18	0.20	28.47	79.43	0.95	6.69	-	0.51	-	141.59
		KOICA	-	-	-	-	-	-	-	-	-	2.55	-	15.62	18.17
		Kuwait	-	-	4.10	6.66	4.34	2.58	2.17	6.54	12.83	4.67	-	0.90	44.81
		Netherlands	-	-	-	-	-	-	-	-	-	-	-	-	-
		Saudi Arabia	0.16	-	3.82	2.71	0.03	0.46	0.02	0.76	4.33	2.18	-	-	14.48
			37.76	7.51	13.03	109.16	86.20	153.94	140.65	89.63	156.13	78.82	45.16	16.55	934.52
	European Union	European Union	419.45	49.01	136.81	89.49	2.01	81.96	-	39.61	15.03	27.71	61.39	50.95	973.41
			419.45	49.01	136.81	89.49	2.01	81.96	-	39.61	15.03	27.71	61.39	50.95	973.41
	IFIs	ADB	27.38	21.93	21.18	30.95	31.90	72.49	53.05	67.69	59.79	53.78	56.68	48.71	545.52
		BADEA	4.44	6.64	11.28	4.78	3.22	6.31	2.20	0.76	6.20	15.13	6.85	2.28	70.07
		IDA	61.24	66.53	70.33	134.69	138.79	134.48	123.96	105.31	138.82	109.35	34.75	12.59	1,130.83
		NDF	3.91	1.99	2.44	1.61	0.94	-	-	-	-	-	-	-	10.89
		OFID	7.97	10.92	8.55	3.98	2.38	2.07	1.43	1.32	9.16	11.53	11.46	4.23	74.99
			104.94	108.01	113.78	176.00	177.22	215.34	180.63	175.07	213.97	189.78	109.74	67.80	1,832.30
			562.15	164.53	263.62	374.65	265.43	451.24	321.28	304.30	385.12	296.31	216.29	135.30	3,740.23
WATER SUPPLY AND SANITATION	BILATERAL Group	CIDA Canada	-	-	-	-	0.75	0.49	-	-	-	-	-	-	1.24
		China	-	-	-	-	-	29.98	38.28	85.00	-	-	-	-	153.26
		Czech Republic	-	-	-	-	1.39	0.04	-	0.37	0.01	0.65	1.77	0.62	4.85

OECD/DAC Sector	Donor Group	Donor Agency	Funding												Totals
			Fiscal Year 2000	Fiscal Year 2001	Fiscal Year 2002	Fiscal Year 2003	Fiscal Year 2004	Fiscal Year 2005	Fiscal Year 2006	Fiscal Year 2007	Fiscal Year 2008	Fiscal Year 2009	Fiscal Year 2010	Fiscal Year 2011	
		DFID	20.42	15.26	18.59	55.07	8.61	0.05	14.61	51.18	25.29	28.99	30.01	14.24	282.31
		Finland	2.39	7.03	11.73	16.10	8.49	7.26	9.34	3.25	6.42	2.96	6.21	5.50	86.68
		France	0.92	0.51	3.94	0.85	2.26	1.78	3.25	8.33	3.56	3.78	-	0.58	29.76
		Germany	5.52	3.14	2.14	-	0.16	-	0.08	0.01	-	-	-	-	11.06
		Italy	-	-	0.07	4.95	0.14	3.08	2.29	0.08	3.75	5.38	-	-	19.74
		JICA	0.88	0.71	2.00	15.23	7.84	6.95	9.98	2.80	2.19	1.07	0.42	1.33	51.40
		KOICA	-	0.59	-	-	-	-	-	0.94	3.52	2.83	0.17	0.09	8.15
		Spain	-	0.74	1.43	1.29	-	-	-	-	-	-	-	-	3.46
		Switzerland	-	-	-	-	1.43	2.12	-	-	-	-	-	-	3.55
			30.14	27.97	39.90	93.49	31.07	51.75	77.83	151.95	44.75	45.66	38.58	22.36	655.45
	European Union	European Union	-	3.79	-	2.31	4.76	0.62	-	0.68	4.56	7.20	0.00	-	23.92
			-	3.79	-	2.31	4.76	0.62	-	0.68	4.56	7.20	0.00	-	23.92
	IFIs	ADB	8.49	16.25	22.10	17.15	17.28	9.58	-	-	32.91	11.21	27.06	19.76	181.78
		BADEA	0.28	1.10	1.99	0.46	1.07	0.77	0.08	-	0.49	-	-	-	6.24
		EIB	-	1.42	0.61	7.01	-	1.26	-	-	-	5.20	-	-	15.50
		IDA	30.21	13.69	26.93	23.73	21.83	22.06	35.84	56.49	56.04	93.67	99.27	42.29	522.04
			38.98	32.46	51.63	48.35	40.18	33.66	35.92	56.49	89.44	110.08	126.33	62.05	725.56
	UN Group	UNICEF	9.02	15.41	13.11	27.72	15.74	21.22	18.48	21.39	32.51	37.92	28.36	21.76	262.64
		UNDP	-	-	-	-	-	-	-	-	-	0.32	2.43	1.79	4.53
			9.02	15.41	13.11	27.72	15.74	21.22	18.48	21.39	32.51	38.23	30.79	23.55	267.18
			78.14	79.64	104.63	171.87	91.75	107.25	132.23	230.51	171.25	201.18	195.70	107.96	1,672.11
Totals			1,947	2,465	2,423	2,709	2,548	2,960	3,290	2,953	3,280	3,043	3,496	4,002	35,116

“Data that sit unused
are no different from
data that were never
collected in the first
place.”

Doug Fisher